

HARFORD COUNTY  
PUBLIC SCHOOLS &  
FLO ANALYTICS

# Springboard Proposal

Balancing Enrollment Process  
Advisory Team

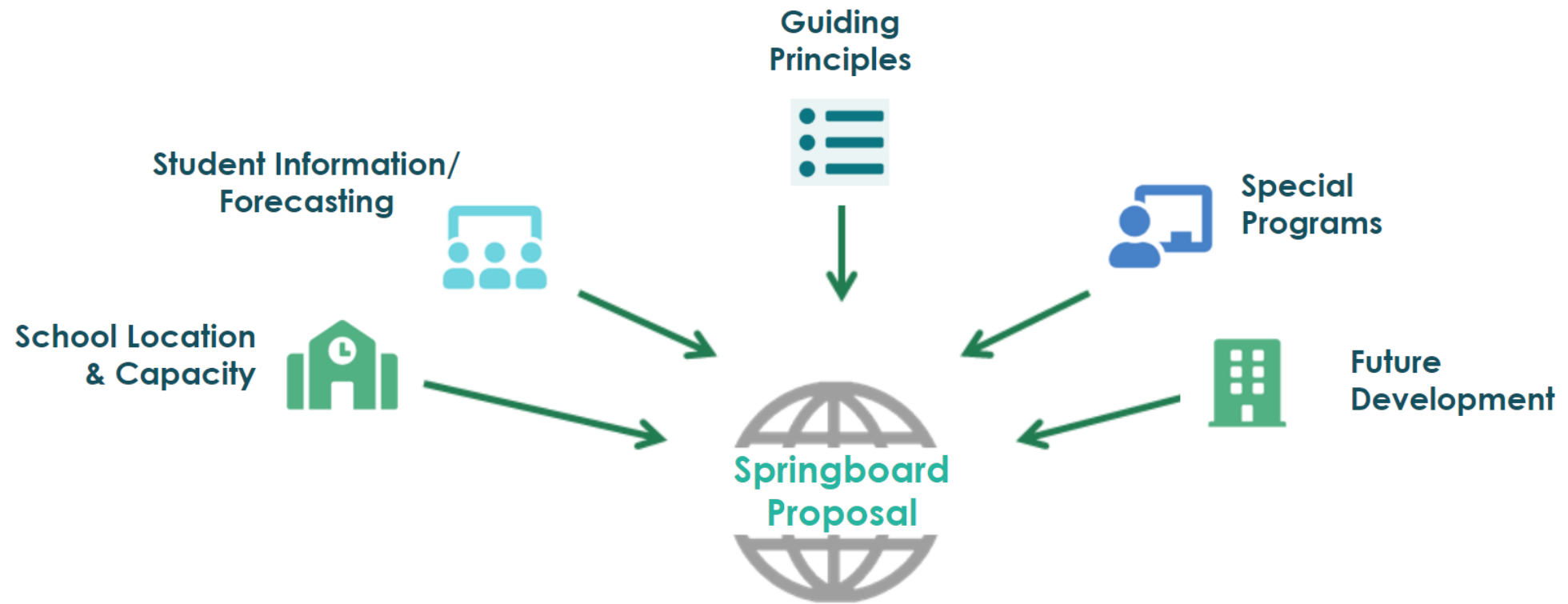
# Springboard Proposal

- Review General Seats Concept
- Springboard Framework
- Elementary School Options
  - Regional Map
  - North Option
  - East & Southeast Options
  - South & Center South Options
  - Center East & Center West Options



# HCPS Data 101

Data used to create the springboard proposal:





- ▶ A starting point of revised boundaries/configurations which meet a targeted number of students per facility and consider the guiding principles
- ▶ FLO took Executive Leadership team feedback into account for the options presented to the Advisory Team to begin your work **today!**
- ▶ Options development iteration takes place over the course of six meetings and two community input forums

## For Each School:

- ▶ Reserve classrooms for regional programs:
  - Pre-K
  - Special Education – Pre-K, STRIVE and CSP
  - Magnet
- ▶ Reviewed State Rated Capacity for remaining general education classrooms
- ▶ Total state rated capacity for those classrooms is what we call “General Seats” going forward
- ▶ We will be balancing enrollment for the general seats at each school.

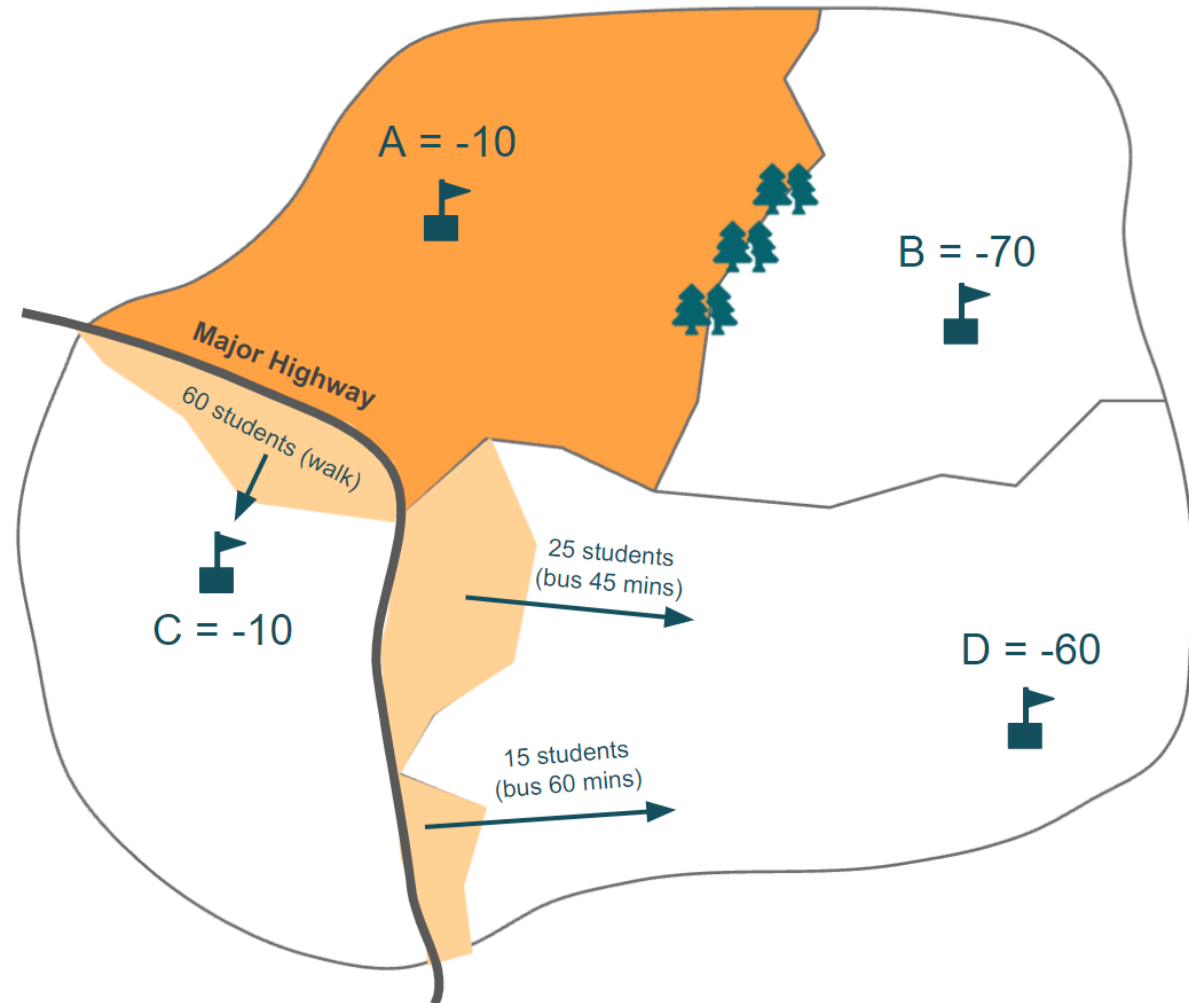
## Example: Roye-Williams Elementary School

- ▶ Classrooms for regional programs: Pre-K (**1**), STRIVE (**2**)
- ▶ Remaining general education classrooms: **4** Kindergarten, **25** 1-5
- ▶ Total state rated capacity for those classrooms: (**4**\*22 students) + (**25**\*23 students) = 663 General Seats

# Boundary Review Exercise

## Springboard Proposal

- FLO Recommendation:
  - a. Move students south of highway to School C
  - b. Move students east of highway to School D
- Results:
  - a. A = -10 (98% utilization)
  - b. B = -70 (85% utilization)
  - c. C = -10 (96% utilization)
  - d. D = -60 (82% utilization)



## Schools:

School A, School B, School C, School D



Schools in the regional analysis.

## Enrollment Balance Objective: 88%



The percent of general seats we are attempting to fill for each school. This balance will vary by region.

## Enrollment Issues:

▶ School A is currently overfilled at 101% of general seats, and is forecast to have 104% of general seats filled by 2026



Enrollment balancing issues to solve for within each region.

▶ School C is forecast to have 98.5% of general seats filled by 2026

## Considerations:

▶ Maintain neighborhood cohesion for School B



Additional considerations taken into account for proposed boundaries.

# Elementary Schools – Regional Options Development

## Regions:

ES = Elementary School

ESN = North

ESE = East

ESSE = Southeast

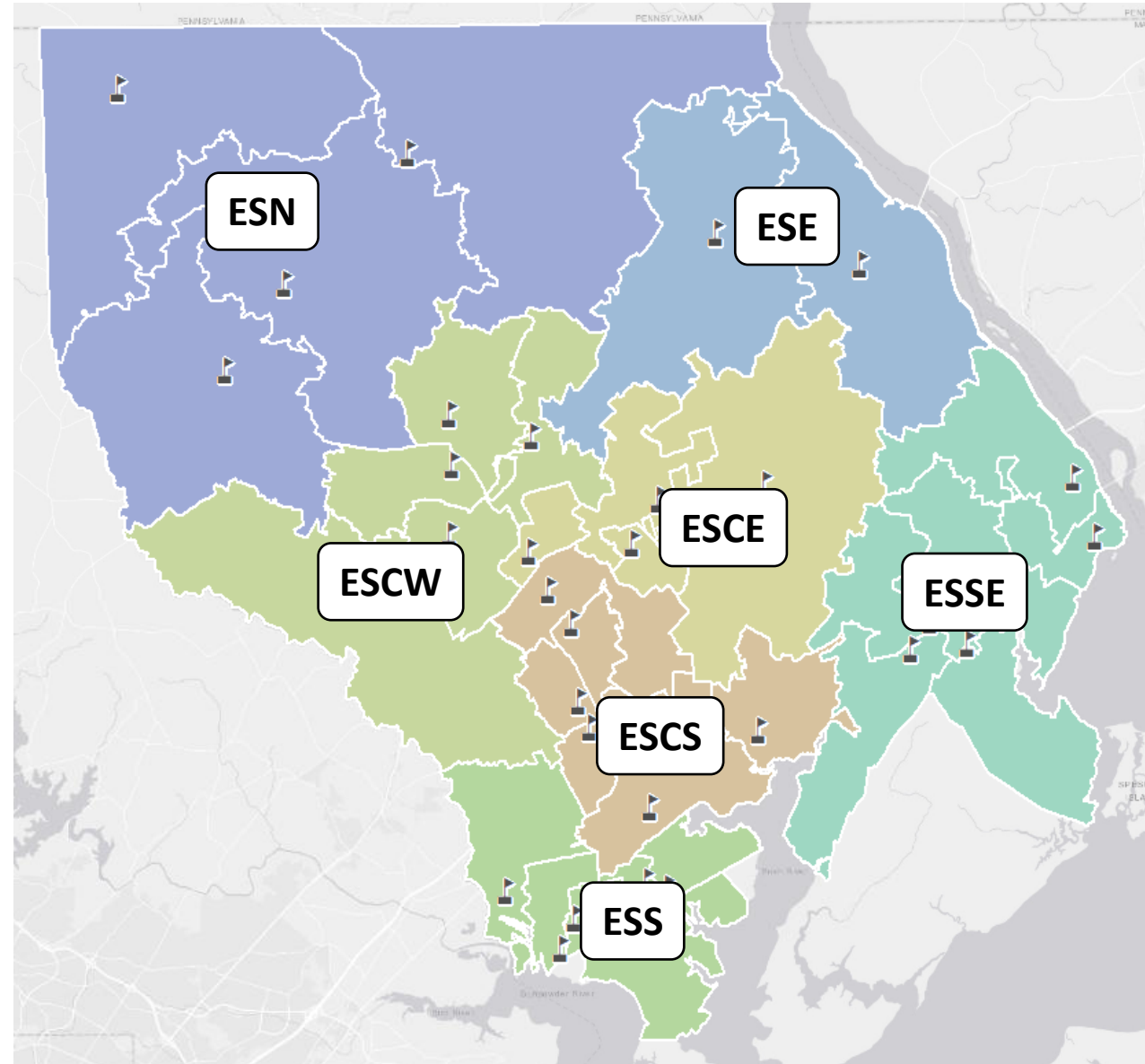
ESS = South

ESCS = Center South

ESCE = Center East

ESCW = Center West

- ▶ Assures we can balance all enrollment to 95% or under for the county
- ▶ Pairs higher utilized schools with lower utilized schools to balance among those schools
- ▶ Maintains transportation distances within each region

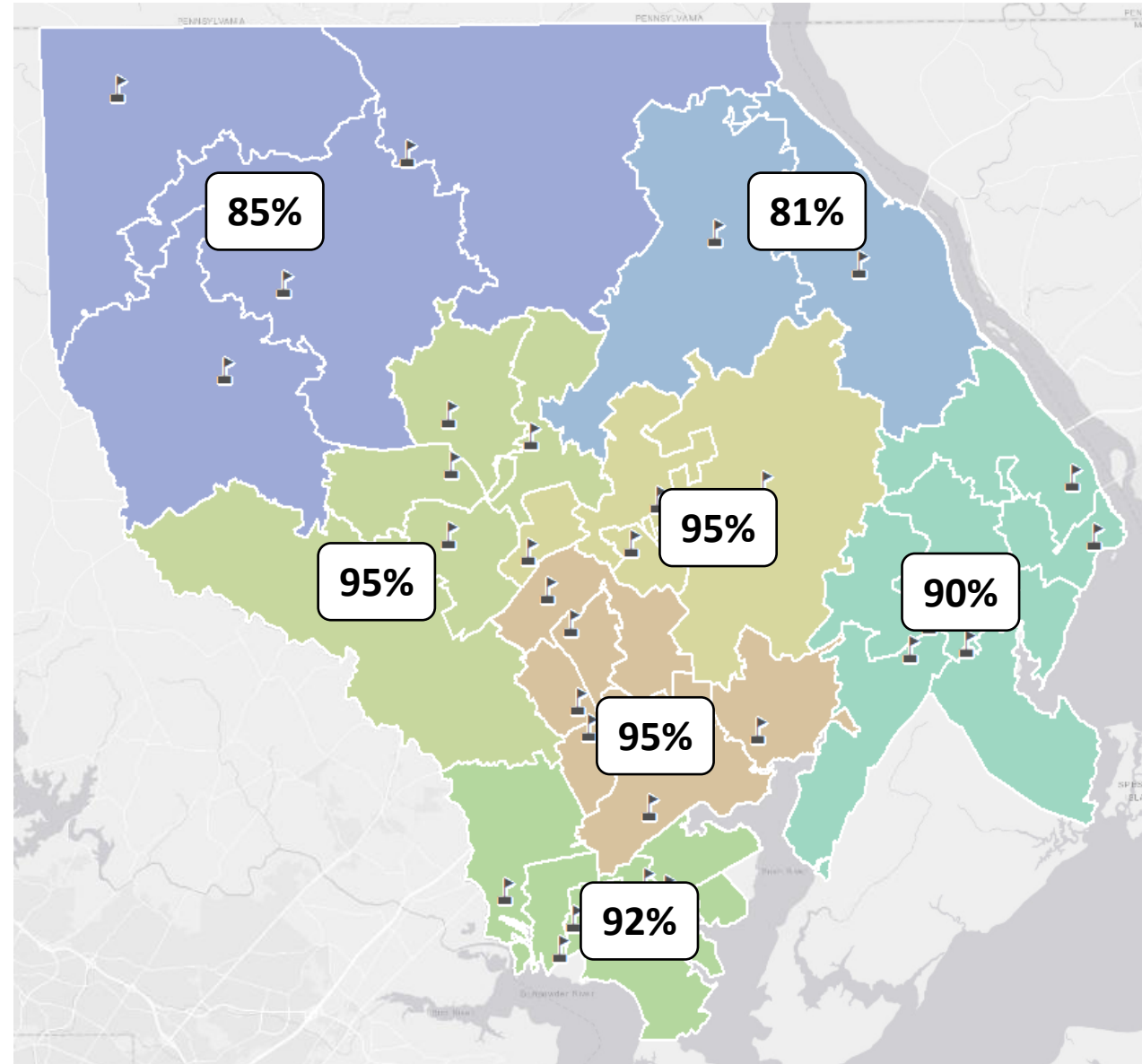




## Enrollment Balance Objective

- ▶ The enrollment balance objective for each region varies due to differences in student population within each region.
- ▶ The objective is calculated by dividing the total number of forecasted students in the region by the total number of general seats in the region.
- ▶ For example in the Southeast region:

**2,643** Forecasted General Education Students  
**2,946** General Seats in the Six Schools  
**90%** Enrollment Balance Objective for all schools



# Elementary School – North Option

## Schools:

Jarrettsville, Norrisville, North Bend, North Harford

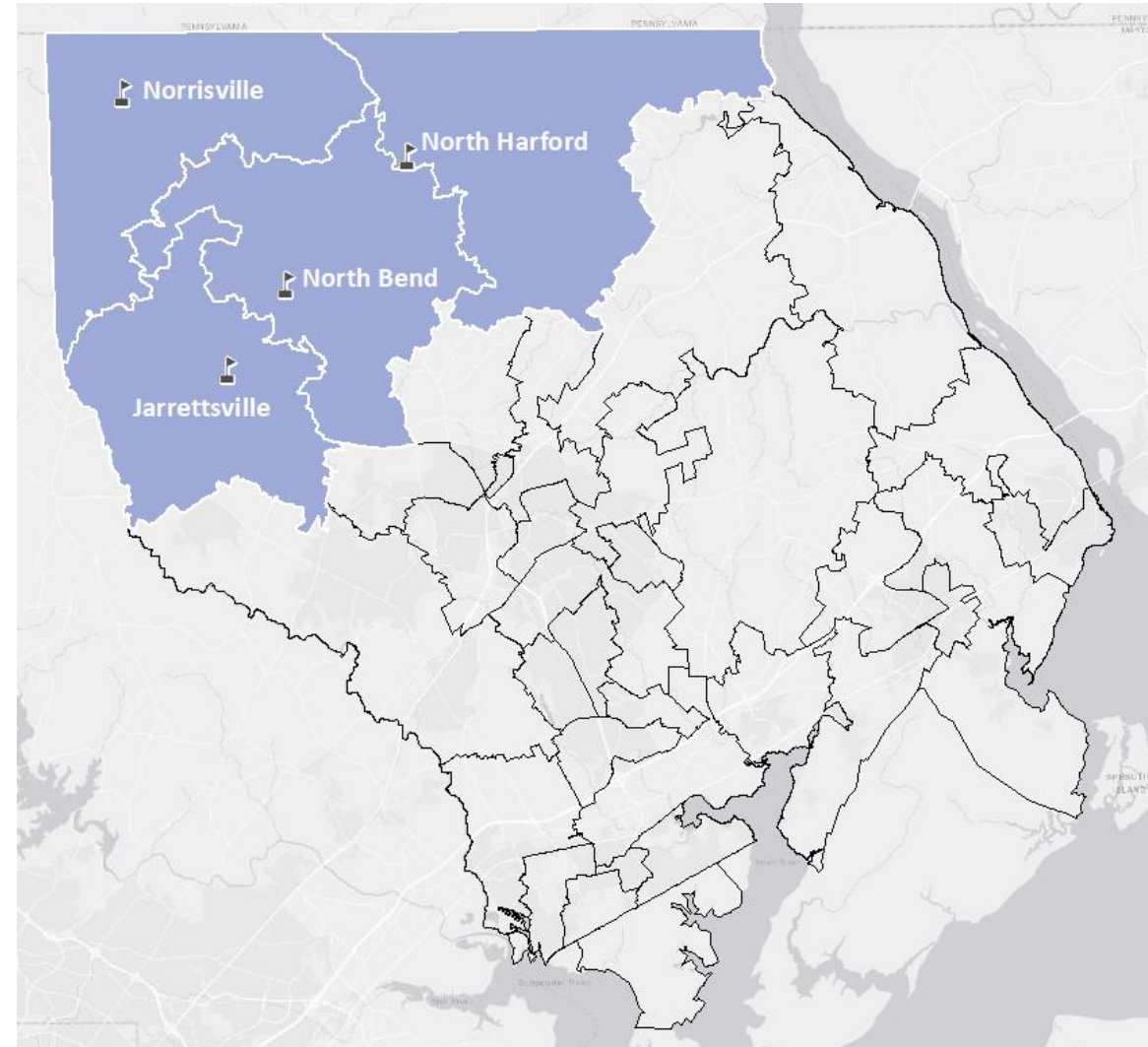
**Enrollment Balance Objective: 85%**

## Enrollment Issues:

- ▶ Norrisville is forecast to have **94.5%** of general seats filled by 2026
- ▶ Need to move students from Center West region to the North Region to address their current enrollment balance of **100%**

## Considerations:

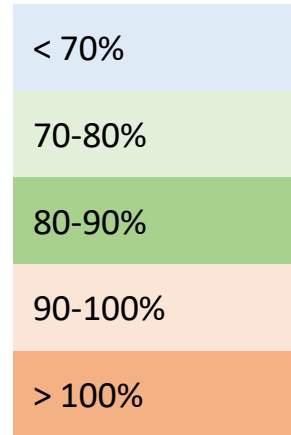
- ▶ Include more students near North Harford ES to reduce transportation time, increase neighborhood cohesion
- ▶ Send some students to the East Region to help with under enrollment



## Current Boundaries

School Name	General Seats Used by 2019 Students	General Seats Used by 2026 Students
Jarrettsville	85.7%	83.4%
Norrisville	79.6%	94.5%
North Bend	76.1%	80.9%
North Harford	74.2%	72.8%

### Legend



## Current Boundaries

School Name	General Seats Used by 2019 Students	General Seats Used by 2026 Students
Jarrettsville	85.7%	83.4%
Norrisville	79.6%	94.5%
North Bend	76.1%	80.9%
North Harford	74.2%	72.8%

## Springboard Boundaries

General Seats Used by 2019 Students	General Seats Used by 2026 Students
84.6%	85.1%
76.3%	86.1%
90.1%	86.9%
74.6%	78.9%

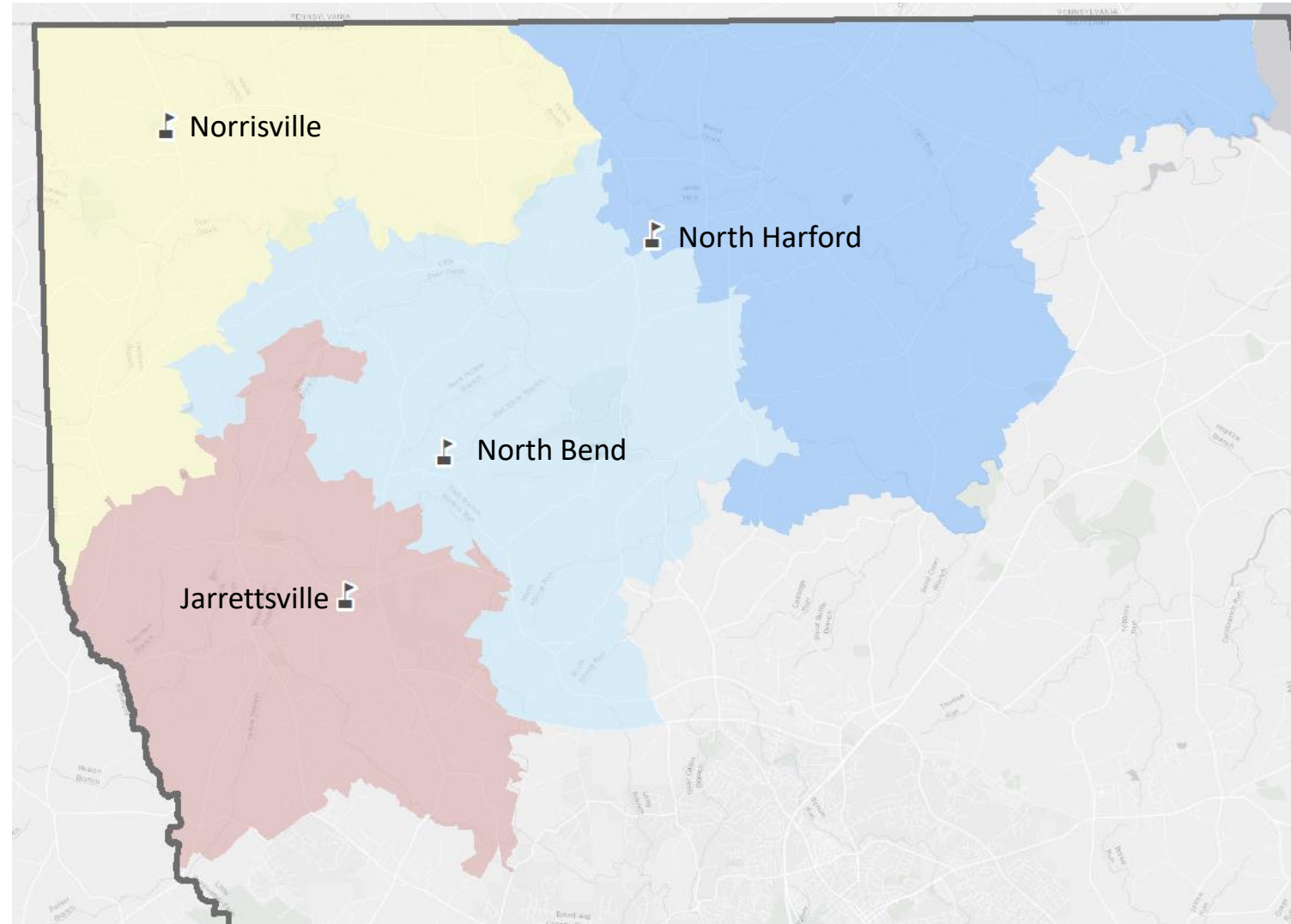
**Enrollment Balance Objective: 85%**

### Legend

< 70%
70-80%
80-90%
90-100%
> 100%

# Elementary School – North Option

**Current  
Boundaries**

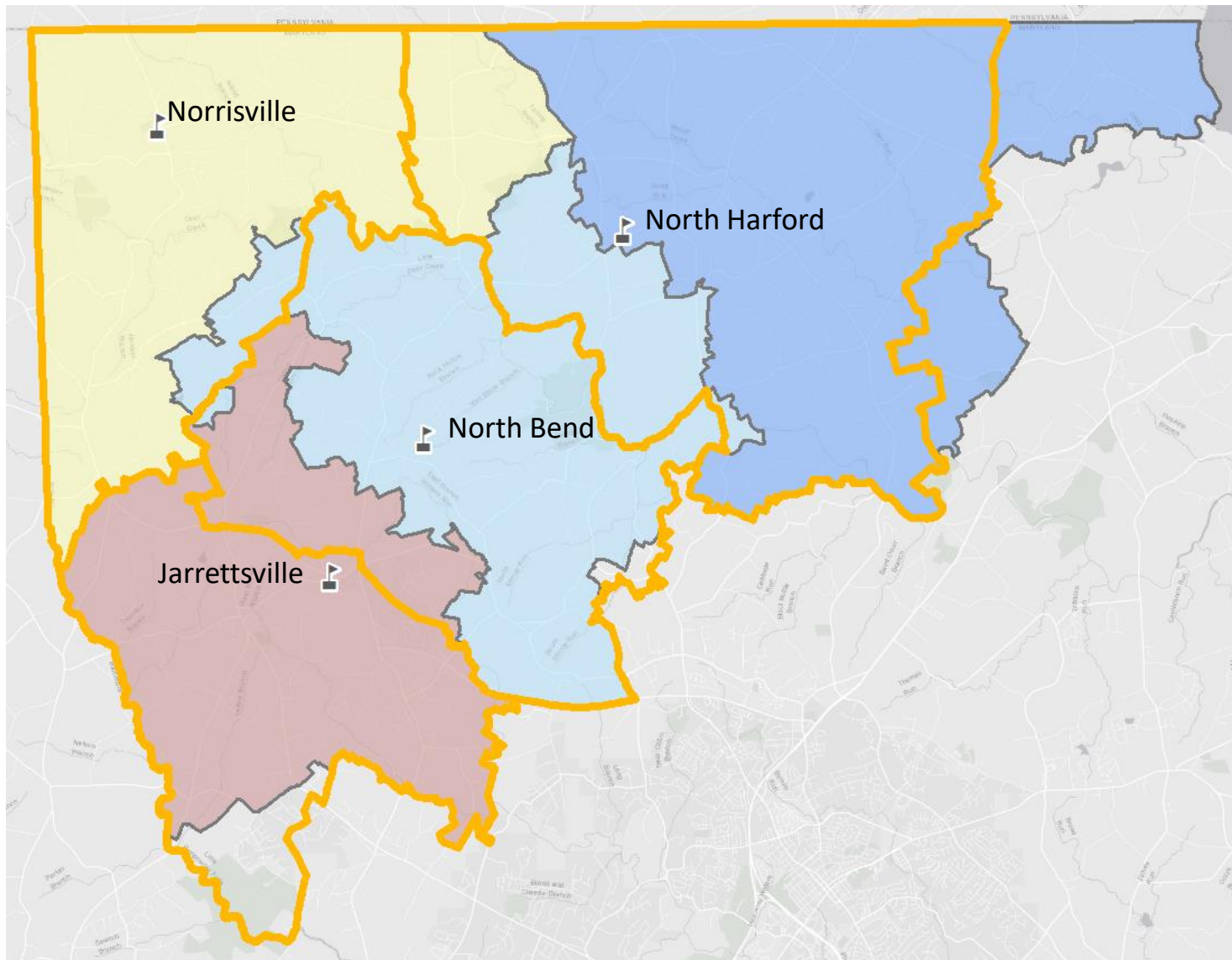




# Elementary School – North Option


## Springboard Map

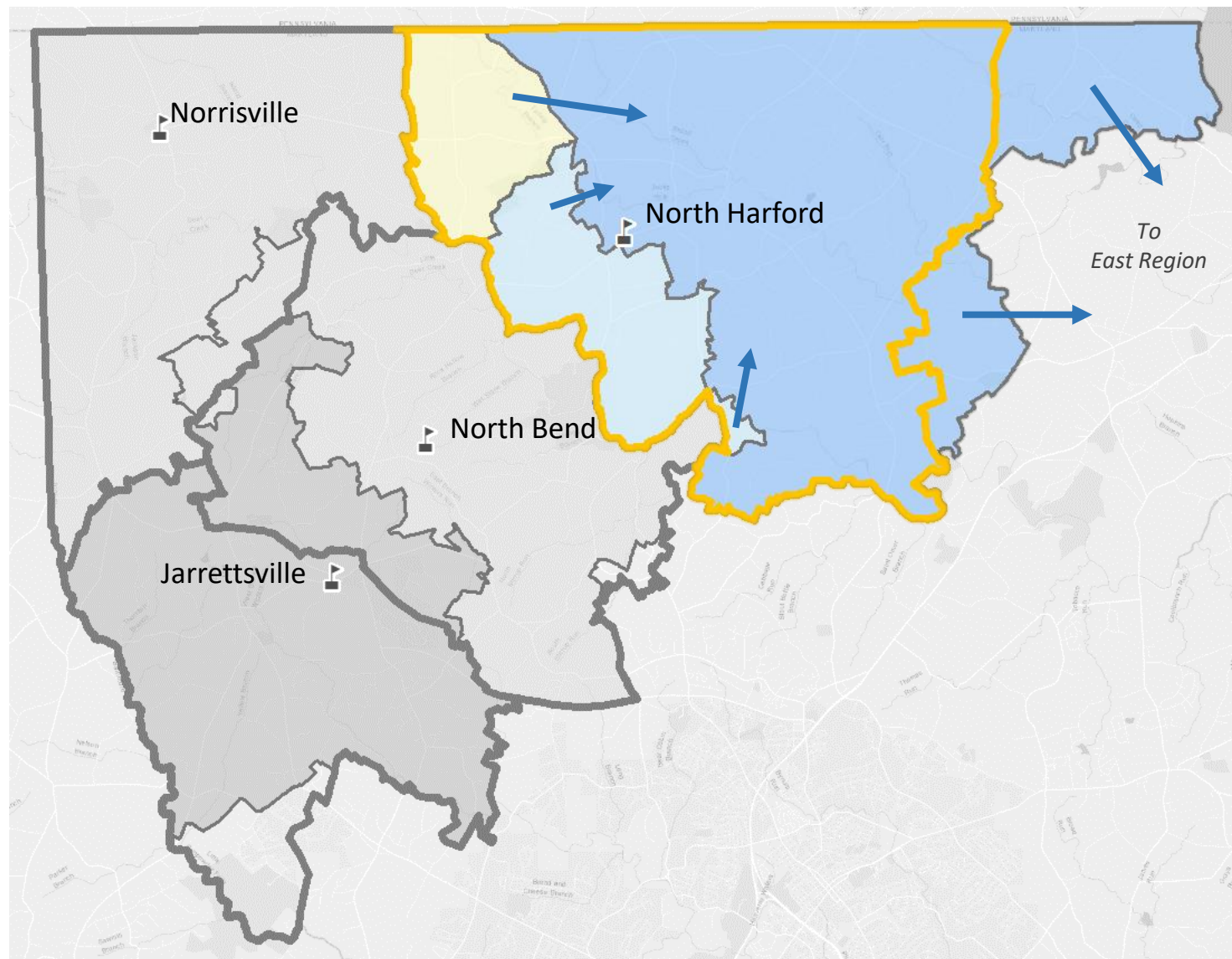
 Proposed Boundary



# Elementary School – North Option

## Springboard Map

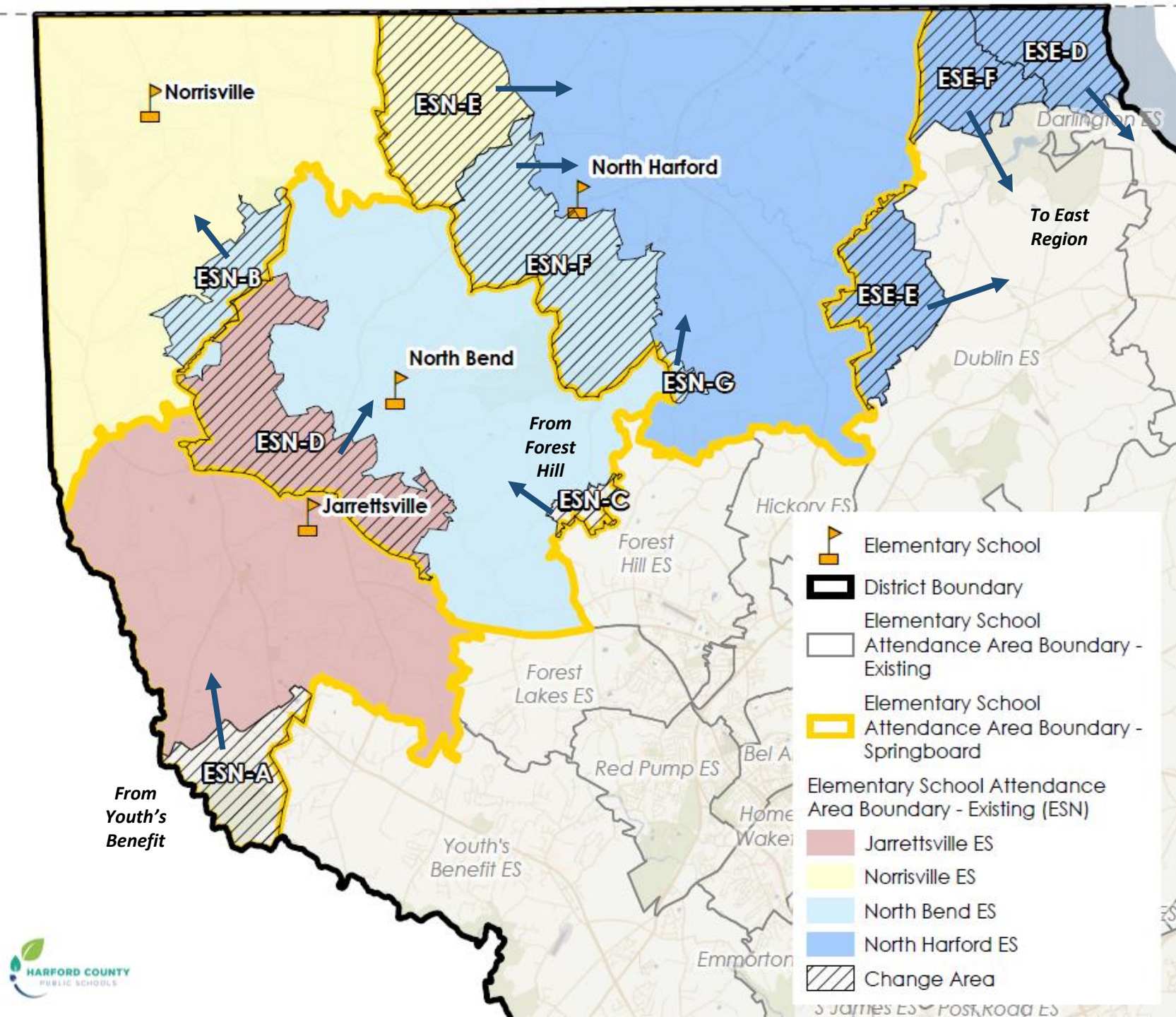
 Proposed Boundary





# Springboard Map

# North Region Option





# Elementary Schools – East & Southeast

# Elementary School – East Option

## Schools:

Darlington & Dublin

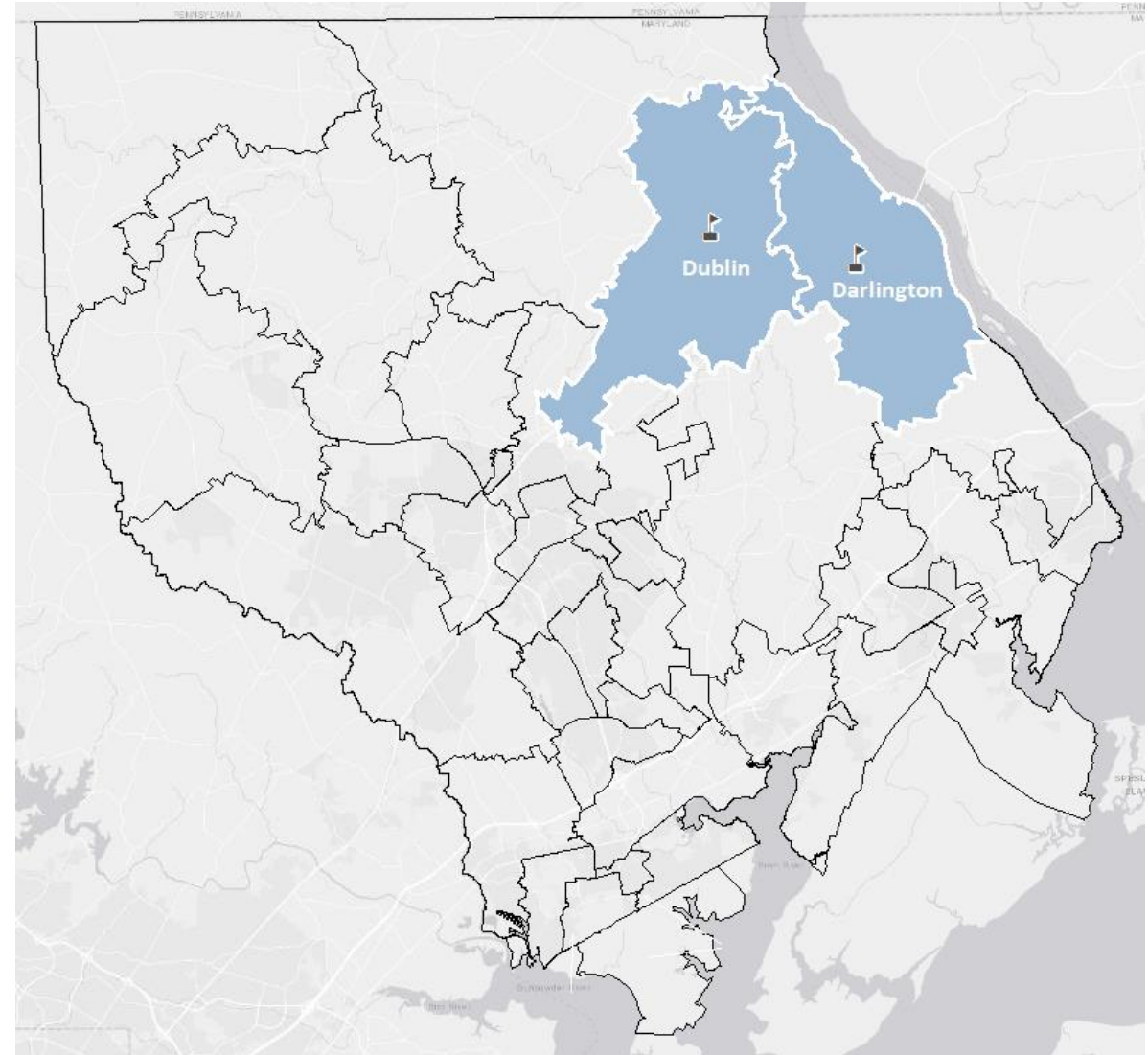
**Enrollment Balance Objective: 82%**

## Enrollment Issues:

- ▶ Dublin and Darlington have space to take some students from North Harford. This allows for more seats for the North option.
- ▶ Ensure Darlington is over 60% in the future

## Considerations:

- ▶ Darlington has one classroom per grade
- ▶ Retain current feeder pattern into Middle Schools (Dublin → North Harford; Darlington → Havre de Grace)



# Elementary School – Southeast Option

## Schools:

Meadowvale, Havre de Grace, Roye-Williams, Hall's Cross Roads, Bakerfield, George D. Lisby

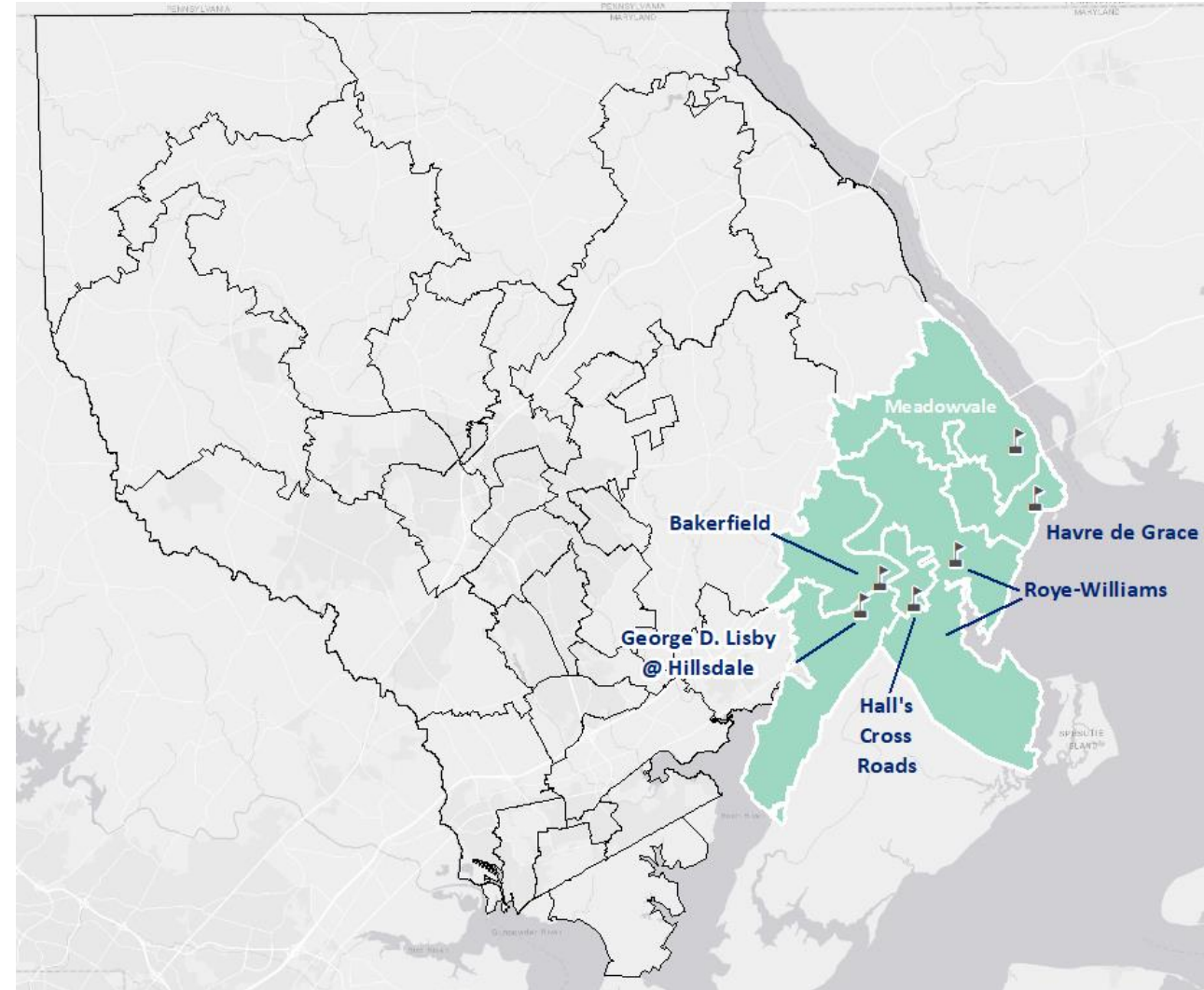
**Enrollment Balance Objective: 90%**

## Enrollment Issues:

- ▶ Havre de Grace is currently over capacity (106%) and will be in the future (109%)
- ▶ Use more space at Roye-Williams (currently 67%)

## Considerations:

- ▶ Keep Aberdeen Proving Grounds students together
- ▶ High levels of residential development in the area will affect student distribution in 2026



## Current Boundaries

School Name	General Seats Used by 2019 Students	General Seats Used by 2026 Students
Darlington	68.6%	54.0%
Dublin	73.4%	67.2%

## Springboard Boundaries

General Seats Used by 2019 Students	General Seats Used by 2026 Students
86.9%	71.5%
87.6%	81.0%

**Enrollment Balance Objective: 81%**

## Current Boundaries

School Name	General Seats Used by 2019 Students	General Seats Used by 2026 Students
Bakerfield	85.3%	90.6%
George D. Lisby	91.7%	87.6%
Hall's Cross Roads	89.0%	84.0%
Havre de Grace	106.0%	108.6%
Meadowvale	92.6%	91.8%
Roye-Williams	66.7%	69.1%

## Springboard Boundaries

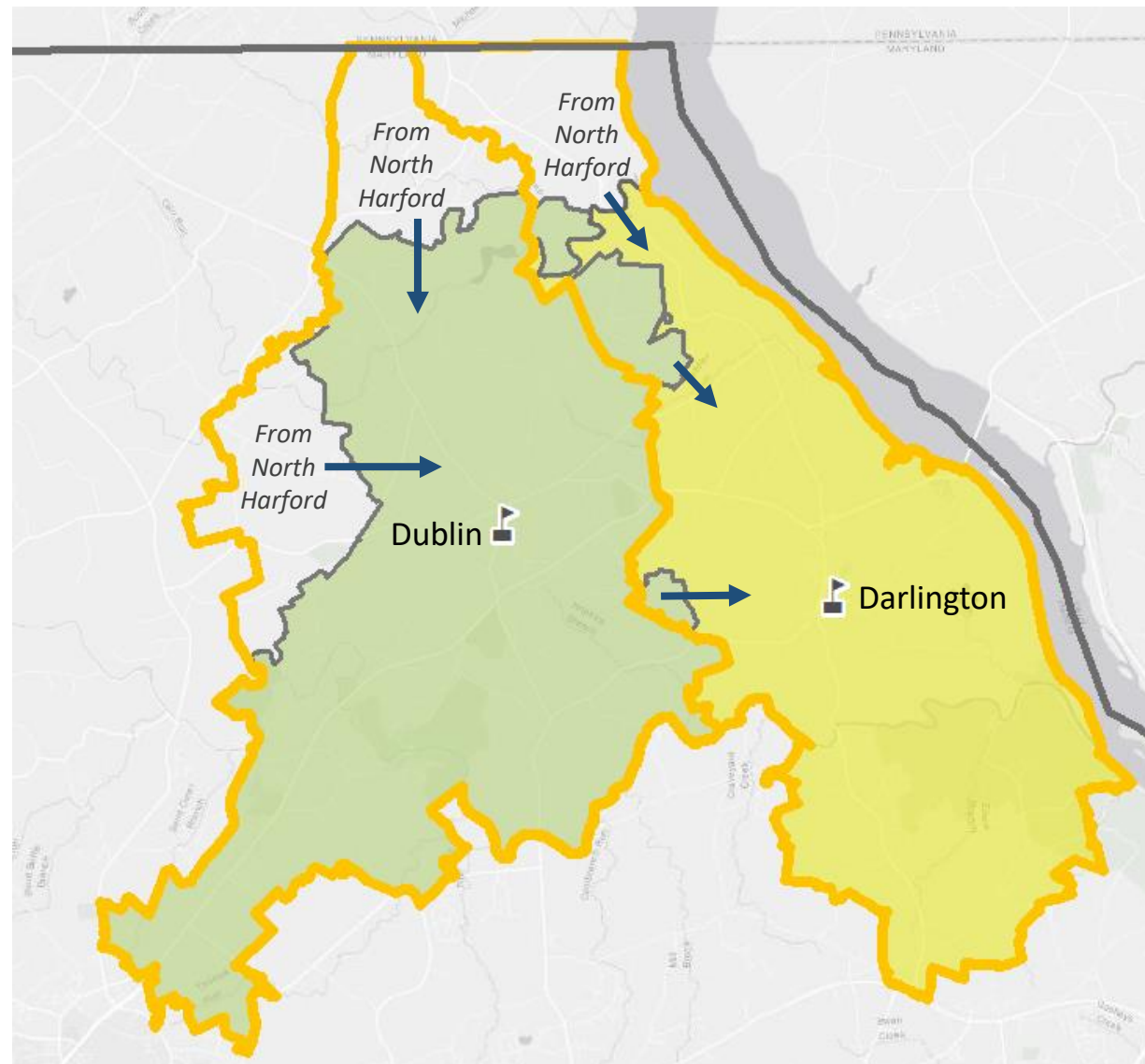
General Seats Used by 2019 Students	General Seats Used by 2026 Students
85.3%	89.7%
92.0%	89.6%
89.0%	85.3%
92.6%	85.7%
86.5%	96.0%
81.6%	81.9%

**Enrollment Balance Objective: 90%**

# Elementary School – East & Southeast Options

## Springboard Map

 Proposed Boundary

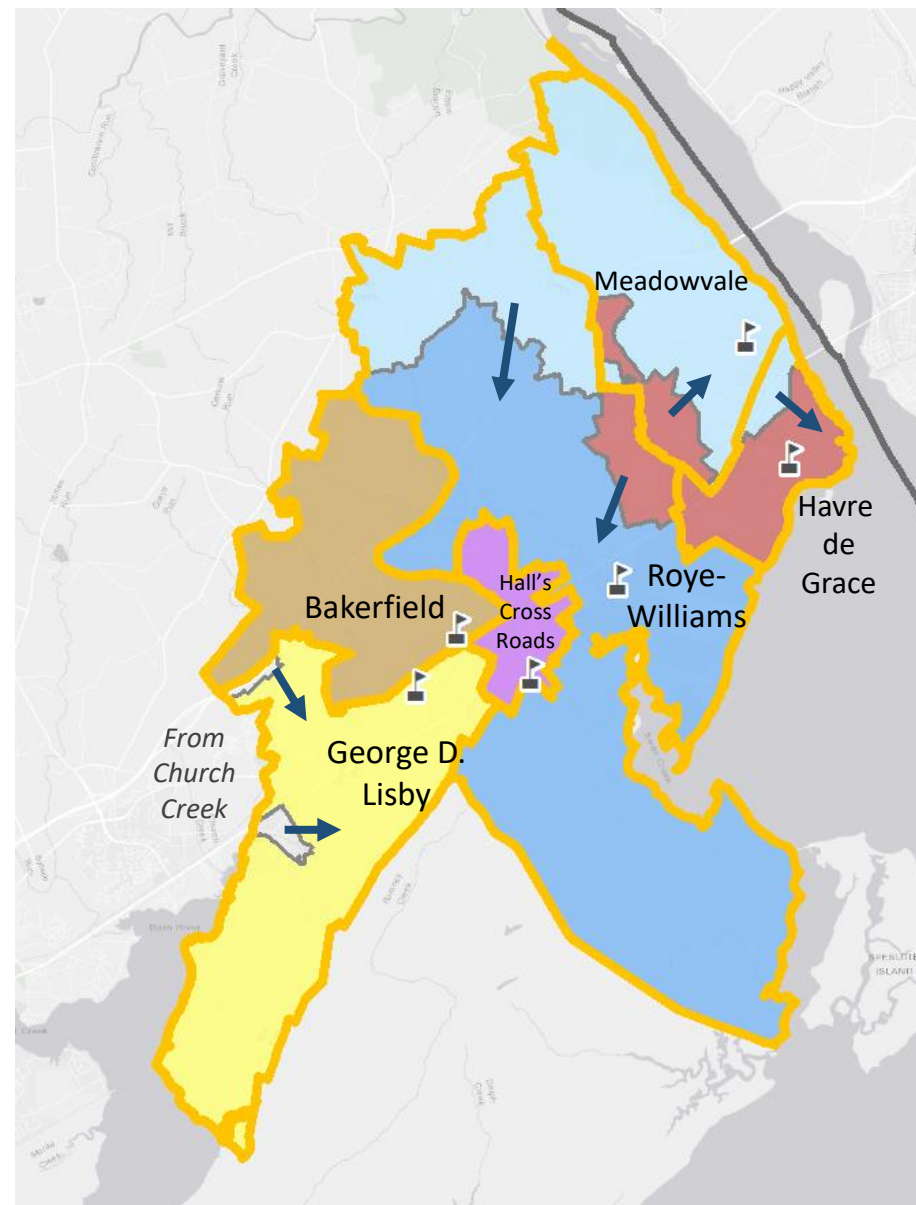




# Elementary School – East & Southeast Options

## Springboard Map

 Proposed Boundary



# Elementary Schools – South & Center South



# Elementary School – South Option

## Schools:

Deerfield, Edgewood, Joppatowne, Magnolia, Riverside

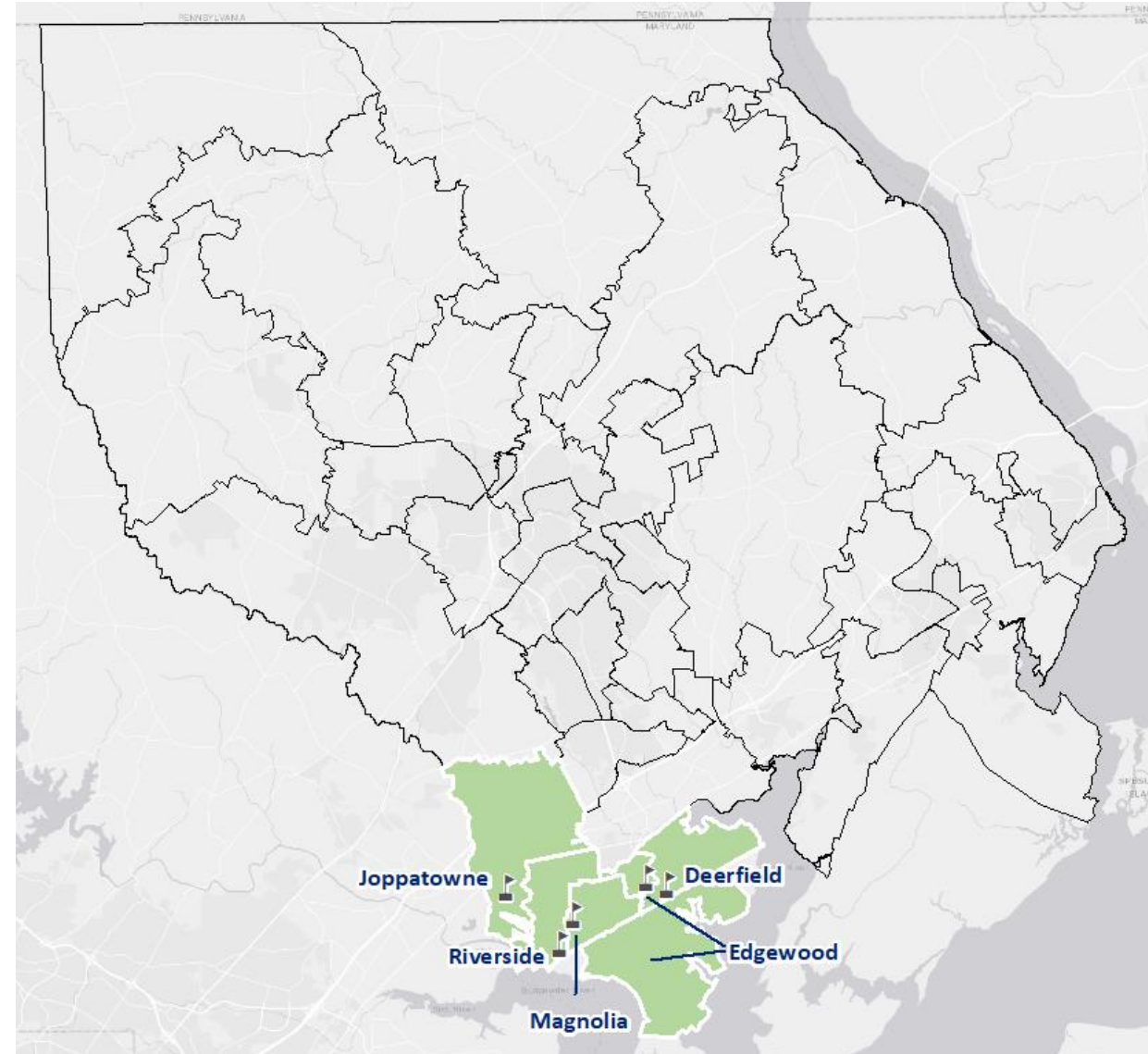
Enrollment Balance Objective: 92%

## Enrollment Issues:

► Magnolia is forecast to have 117% of general education seats filled by 2026

## Considerations:

► Edgewood as a contiguous attendance area.



# Elementary School – Center South Option

## Schools:

Abingdon, Church Creek, Emmorton, Homestead/Wakefield, Ring Factory, William Paca/Old Post Rd, William S. James

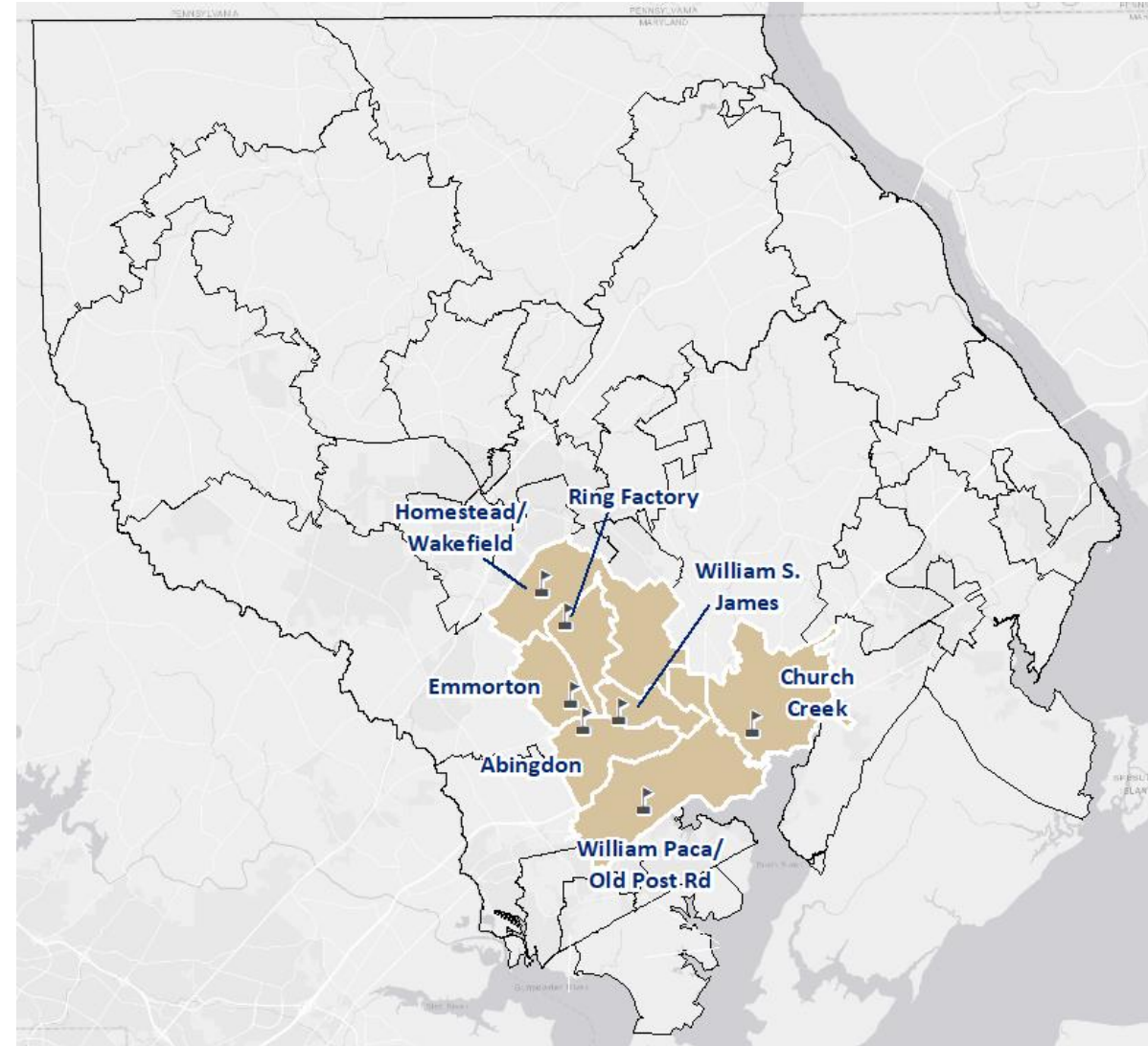
**Enrollment Balance Objective: 95%**

## Enrollment Issues:

- ▶ Emmorton is currently at **104%** of general seats filled and is forecast to have **114%** of general seats filled by 2026
- ▶ Homestead/Wakefield is currently at **120%** of general seats filled and is forecast to have **126%** of general seats filled by 2026
- ▶ Ring Factory will have **100%** of general seats filled in 2026

## Consideration:

New potential space for Homestead/Wakefield (+80 or +180 students)



## Current Boundaries

School Name	General Seats Used by 2019 Students	General Seats Used by 2026 Students
Deerfield	98.1%	87.2%
Edgewood	79.4%	78.9%
Joppatowne	94.1%	92.4%
Magnolia	98.0%	117.2%
Riverside	77.4%	74.8%

## Springboard Boundaries

General Seats Used by 2019 Students	General Seats Used by 2026 Students
99.7%	90.7%
95.9%	94.3%
87.7%	88.9%
83.0%	100%
95.2%	89.6%

**Enrollment Balance Objective: 92%**

# Elementary School – Center South Option



## Current Boundaries

School Name	General Seats Used by 2019 Students	General Seats Used by 2026 Students
Abingdon	81.3%	71.8%
Church Creek	78.5%	77.8%
Emmorton	103.9%	114.4%
Homestead/Wakefield (Current Size)	119.7%	126.1%
Ring Factory	98.4%	100.2%
William Paca/Old Post Rd	90.6%	92.7%
William S. James	96.0%	93.1%

## Springboard Boundaries

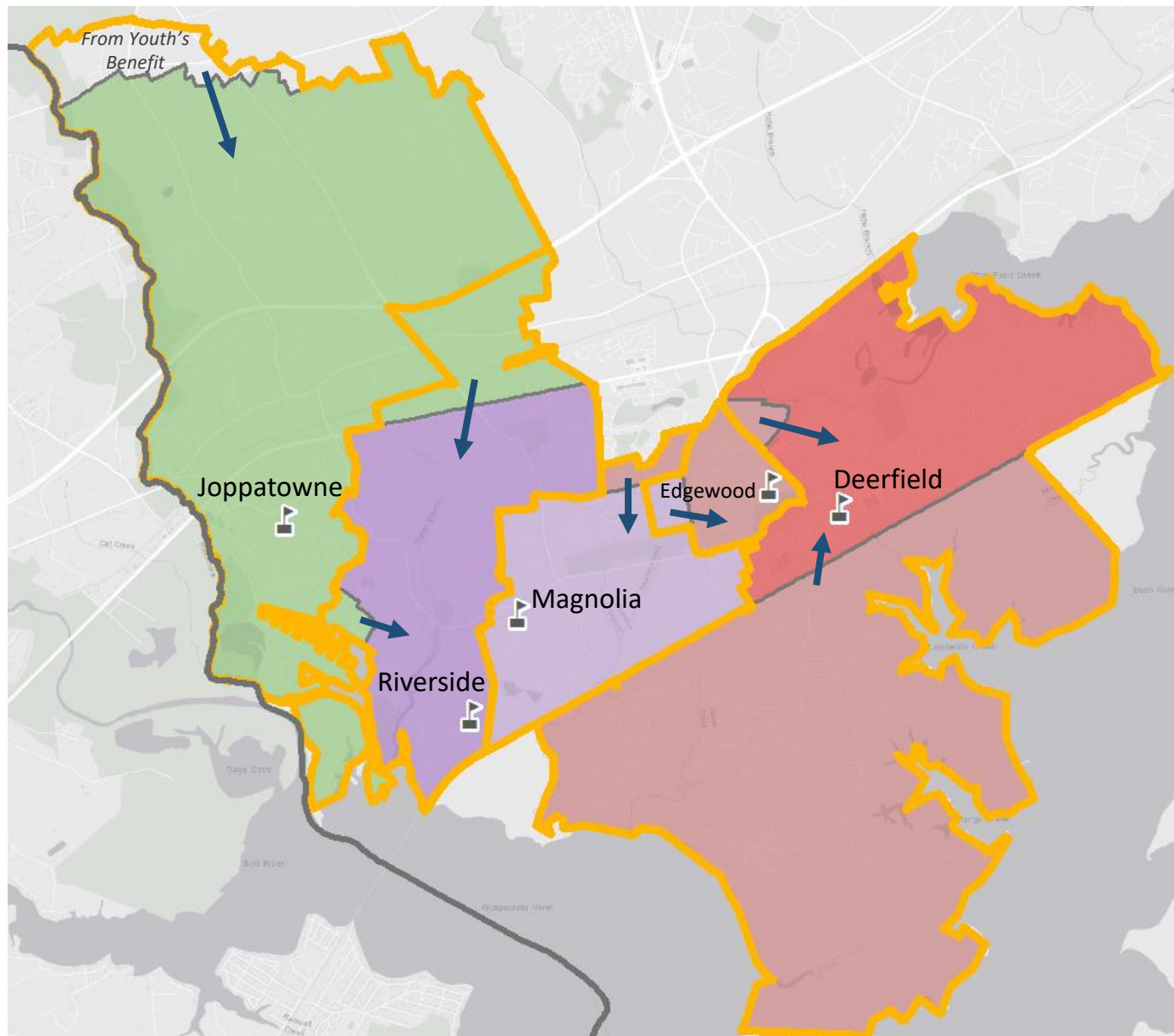
General Seats Used by 2019 Students	General Seats Used by 2026 Students
100.1%	90.8%
100%	99.5%
93.5%	103.7%
91%	95.9%
94.7%	96.7%
90.4%	92.2%
99.6%	96.3%

**Enrollment Balance Objective: 95%**

# Elementary School – South Option

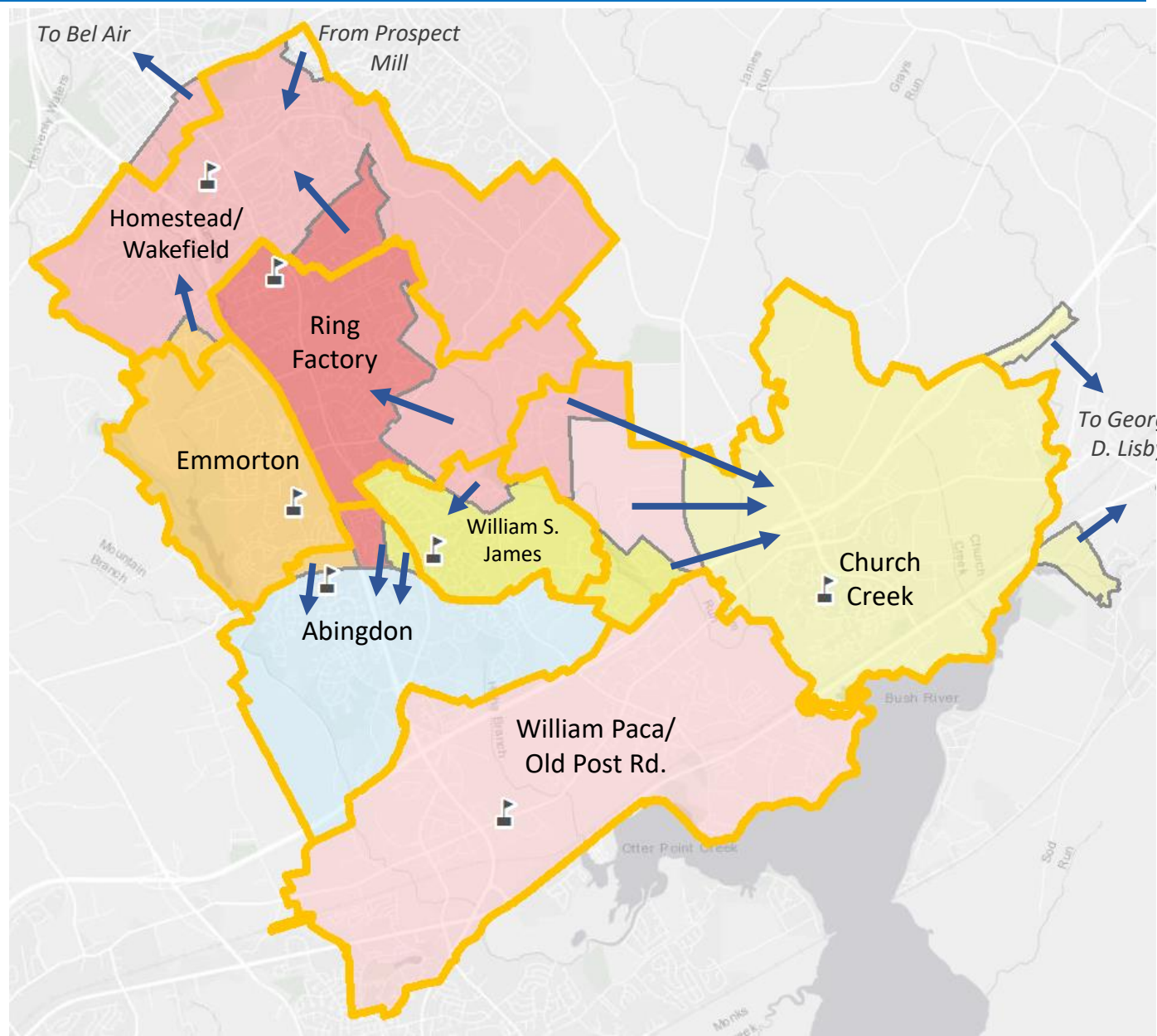
## Springboard Map

 Proposed Boundary





# Elementary School – Center South Option



## Springboard Map

— Proposed Boundary

# Elementary Schools – Center West & Center East

# Elementary School – Center East Option

## Schools:

Bel Air, Churchville, Fountain Green, Prospect Mill

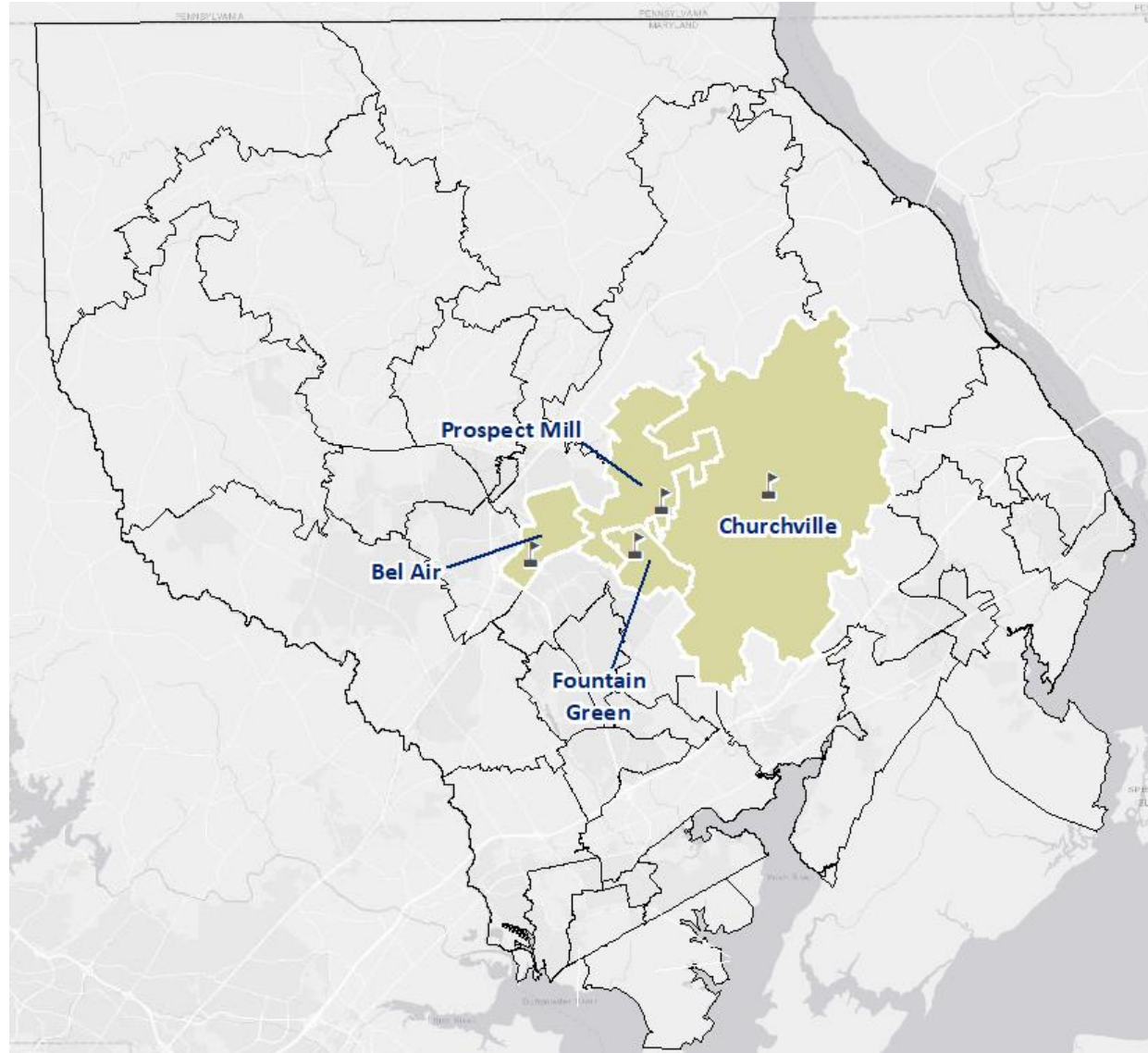
**Enrollment Balance Objective: 95%**

## Enrollment Issues:

- ▶ Bel Air is currently at **108%** of general seats filled and is forecast to have **113%** of general seats filled by 2026
- ▶ Prospect Mill will have **100%** of general seats filled in 2026

## Considerations:

- ▶ While Churchville has space, keep in mind the distance students would have to travel to balance enrollment.





# Elementary School – Center West Option

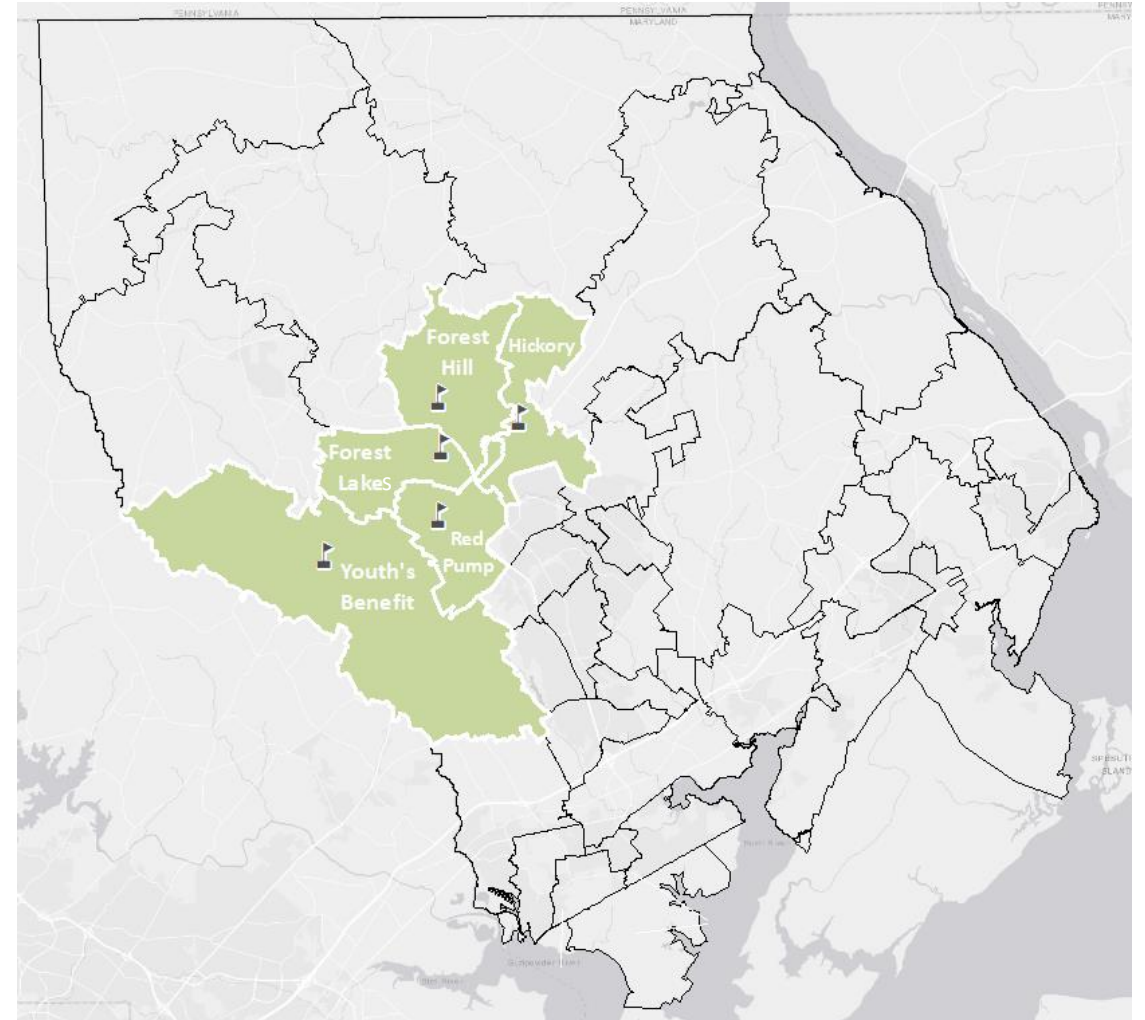
## Schools:

Forest Hill, Forest Lakes, Hickory, Red Pump, Youth's Benefit

**Enrollment Balance Objective: 95%**

## Enrollment Issues:

- ▶ Hickory currently has general seats overfilled at **102%** and will be in the future at **104%**
- ▶ Red Pump is currently over capacity at **106%** and will be in the future at **115%**
- ▶ Moved some students out of this region. Otherwise, the **regional enrollment balance is 100%**.



## Current Boundaries

School Name	General Seats Used by 2019 Students	General Seats Used by 2026 Students
Bel Air	108.1%	112.9%
Churchville	90.0%	86.6%
Fountain Green	88.3%	83.8%
Prospect Mill	98.4%	99.6%

## Springboard Boundaries

General Seats Used by 2019 Students	General Seats Used by 2026 Students
87.5%	93.2%
94.6%	92.2%
98.2%	94.5%
98%	95.3%

**Enrollment Balance Objective: 95%**

## Current Boundaries

School Name	General Seats Used by 2019 Students	General Seats Used by 2026 Students
Forest Hill	89.4%	87%
Forest Lakes	85.1%	87.8%
Hickory	102%	104.4%
Red Pump	106.2%	114.9%
Youth's Benefit	96.4%	98.6%

## Springboard Boundaries

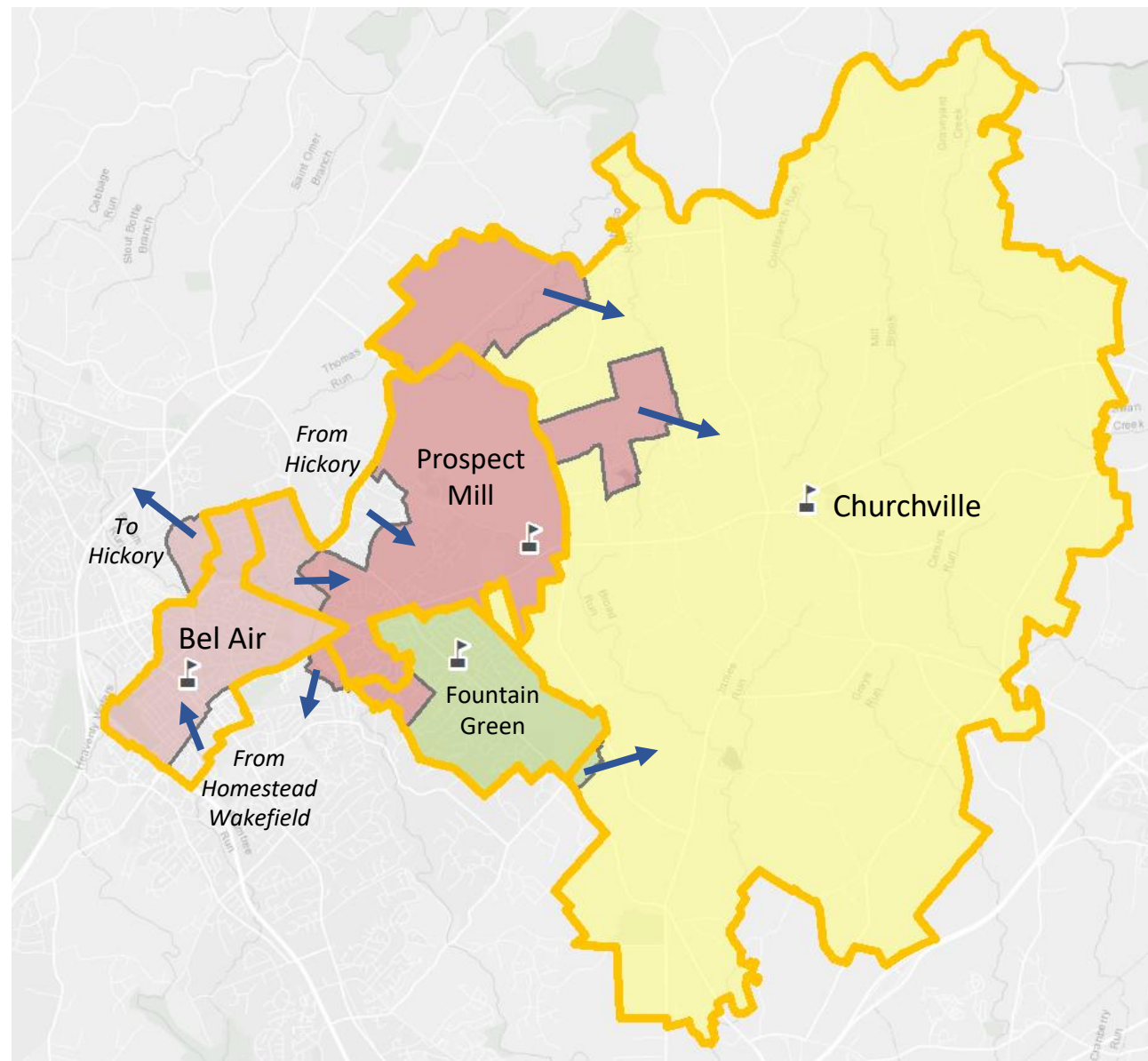
General Seats Used by 2019 Students	General Seats Used by 2026 Students
97.3%	97.9%
89.9%	92.7%
92.7%	96.8%
90%	96.6%
94.7%	96.1%

**Enrollment Balance Objective: 95%**

# Elementary School – Center East Option

## Springboard Map

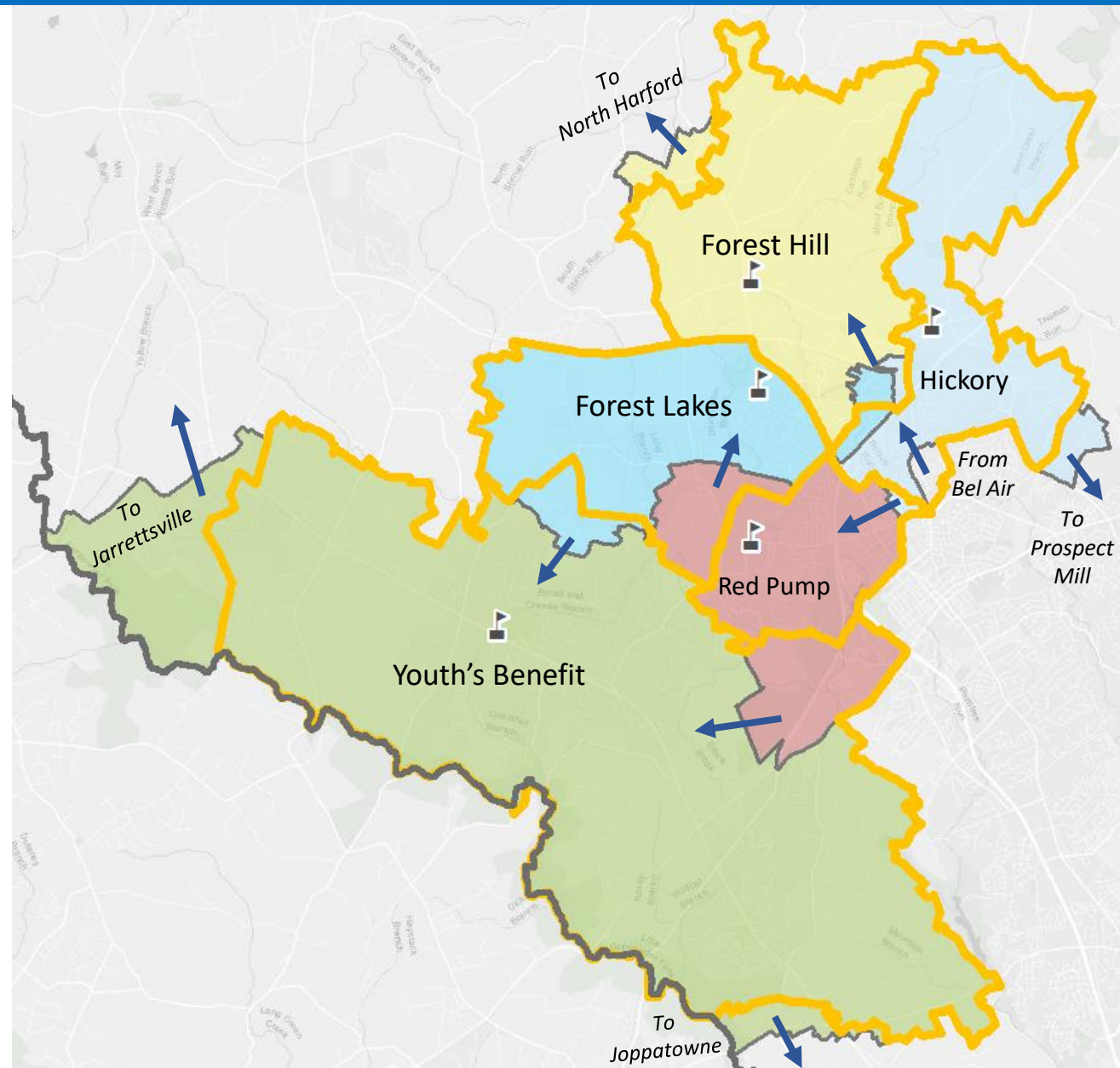
 Proposed Boundary



# Elementary School – Center West Option

## Springboard Map

 Proposed Boundary



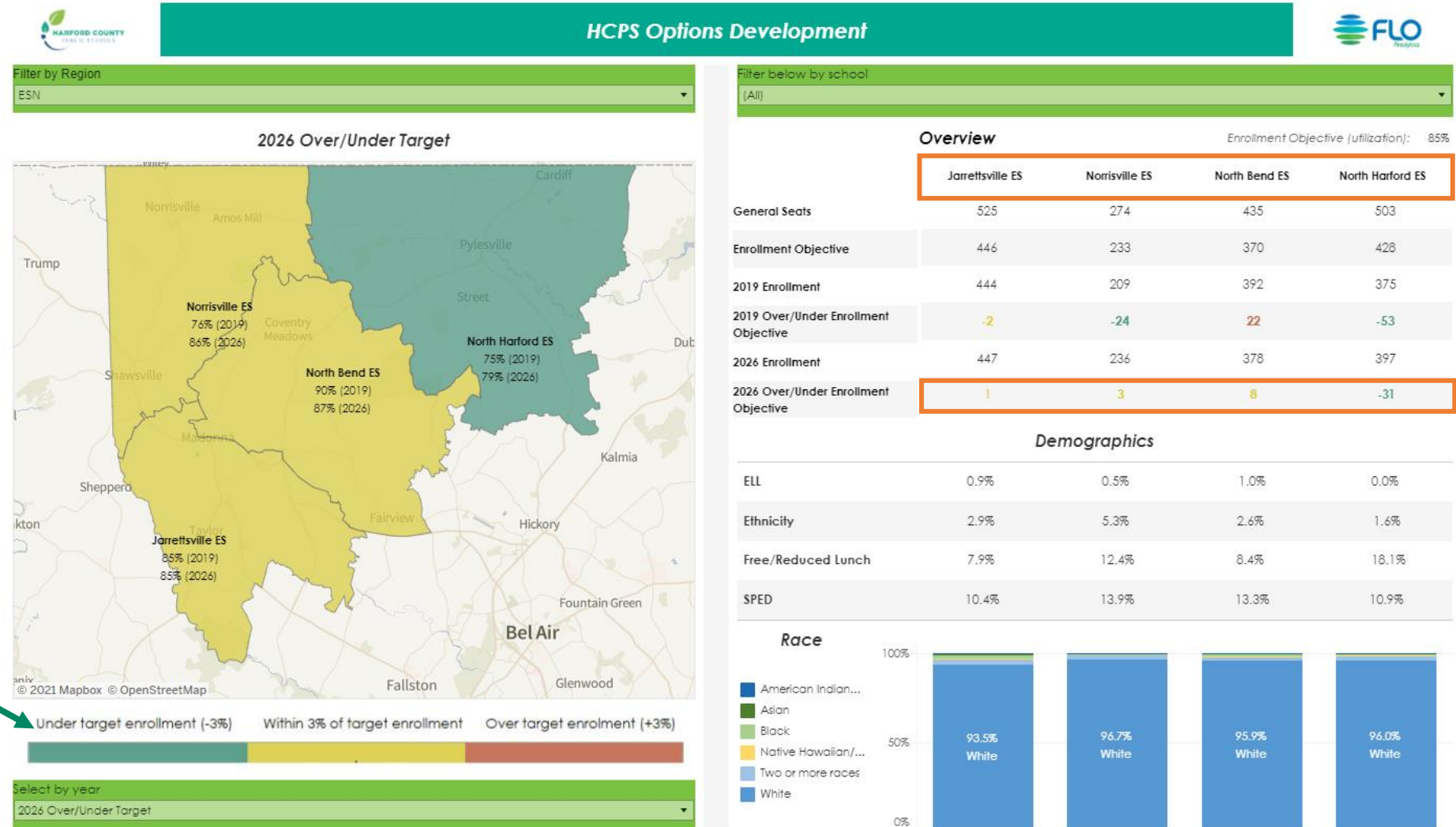


# North Option Boundary Review

- Region Statistics Dashboard
- North Option – Q+A
- North Option Breakout Groups!

Since we are tasked with reviewing and adjusting boundaries,  
how will we know we are on the right track?

# Region Statistics Dashboard



Filter by Region →

Map of Changed Boundaries →

Symbolized by under/at/over objective →

Look at 2019 or 2026 student enrollment →

Summary stats represent the work completed as part of the HCPS comprehensive boundary review. The numbers presented are NOT final and are subject to change as the committee continues their work throughout the duration of the balancing enrollment process.



# Elementary School – North Option Recap

## Schools:

Jarrettsville, Norrisville, North Bend, North Harford

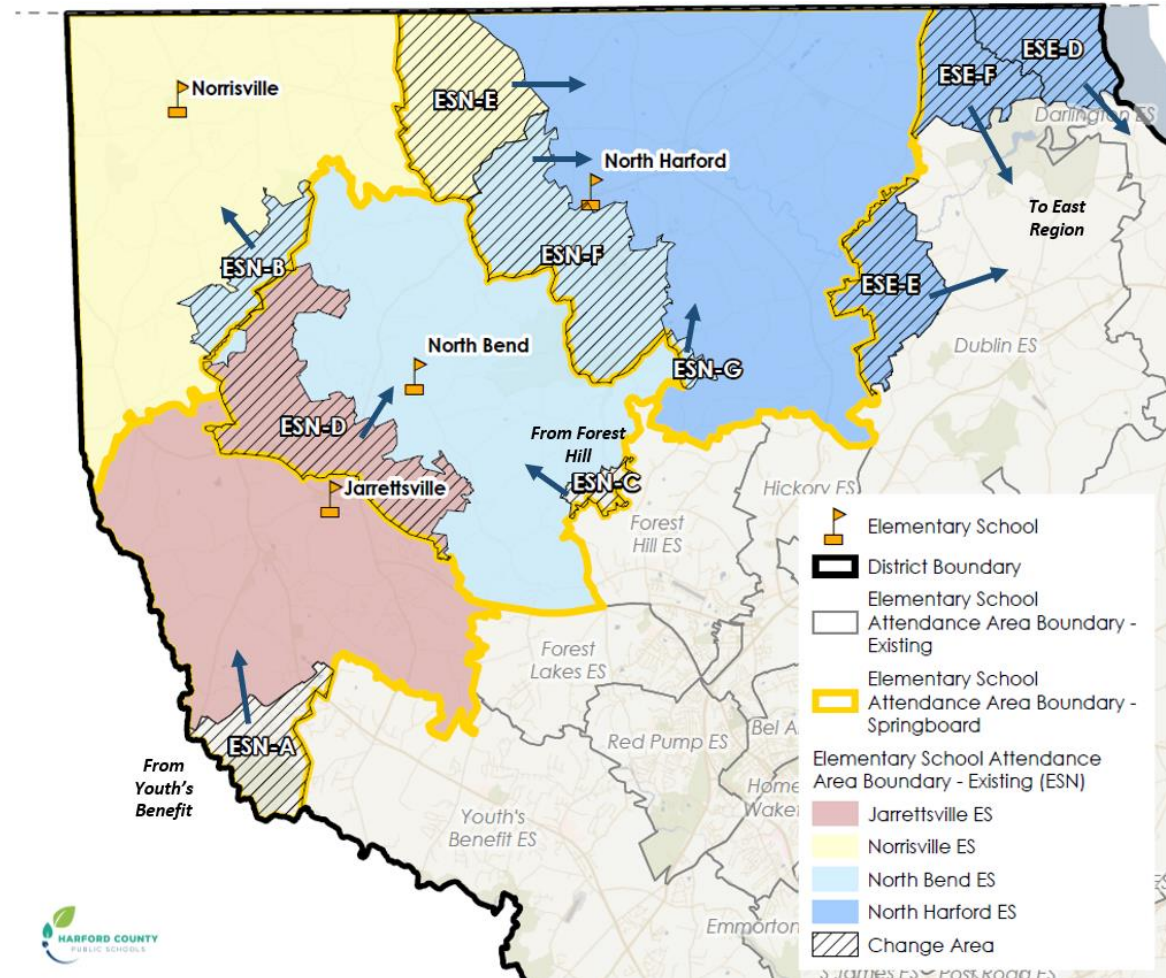
**Enrollment Balance Objective: 85%**

## Enrollment Issues:

- ▶ Norrisville is forecast to have **94.5%** of general seats filled by 2026
- ▶ Need to move students from Center West region to the North Region to address their current enrollment balance of **100%**

## Considerations:

- ▶ Include more students near North Harford ES to reduce transportation time, increase neighborhood cohesion
- ▶ Send some students to the East Region to help with under enrollment



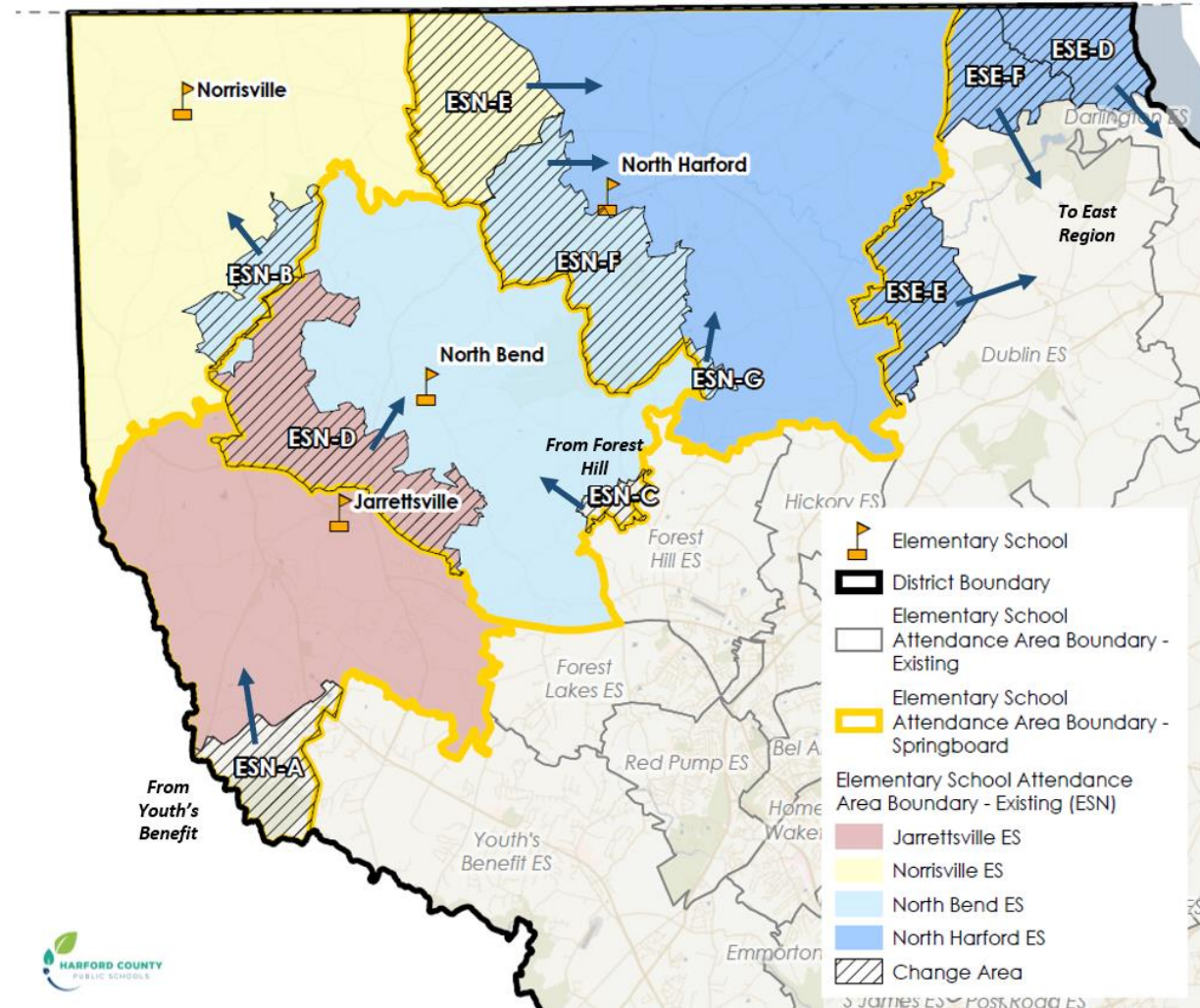
# Elementary School – North Option

## Schools:

Jarrettsville, Norrisville, North Bend, North Harford

Enrollment Balance Objective: 85%

Any questions on the North Option before we go into our groups? (2 min reflection)





# Springboard Map

# North Region Option

