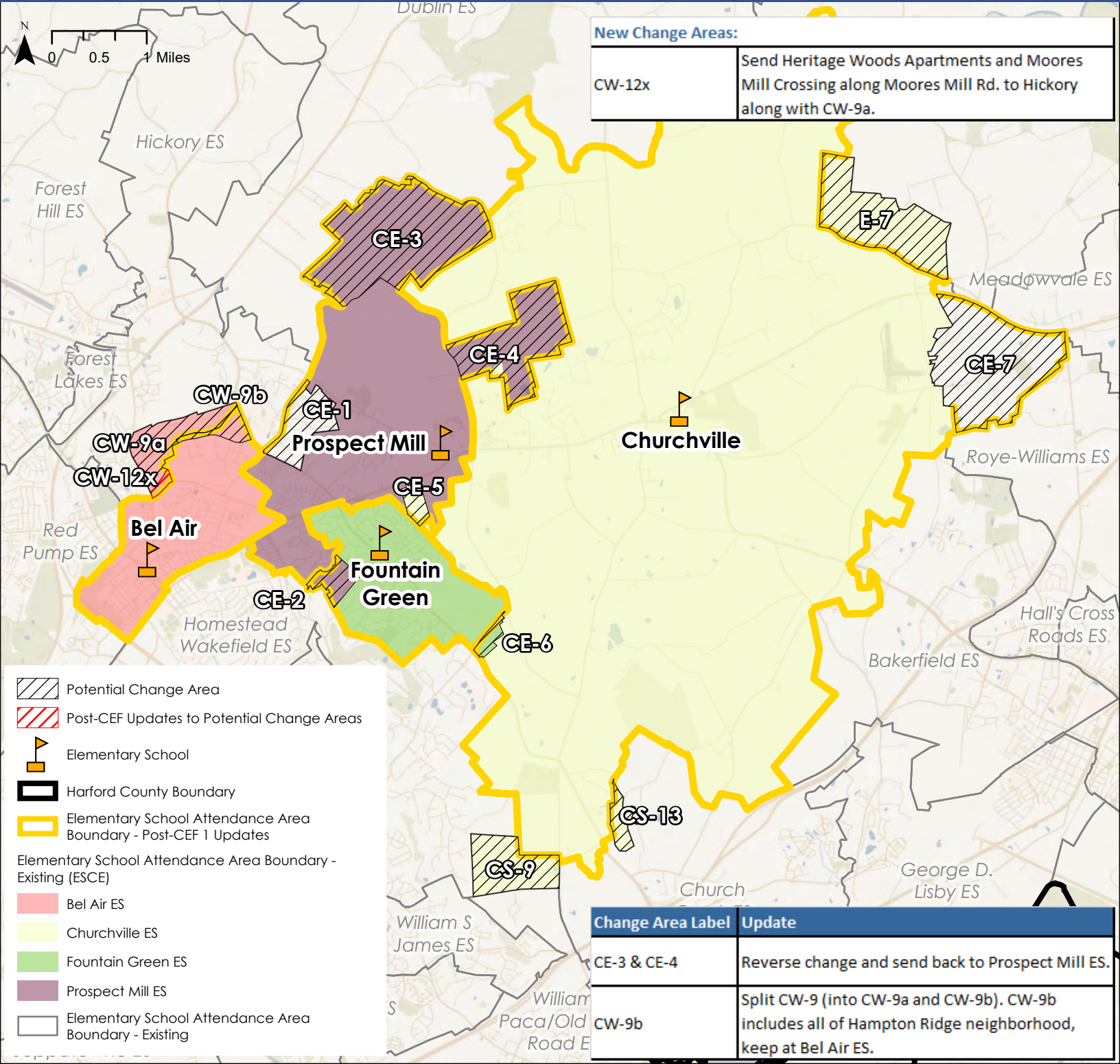


District Overview - Post-CEF 1 Updates

Elementary School Center East (ESCE)



New Change Areas:









CW-12x	Send Heritage Woods Apartments and Moores Mill Crossing along Moores Mill Rd. to Hickory along with CW-9a.
--------	--

Potential Change Area
 Post-CEF Updates to Potential Change Areas
 Elementary School
 Harford County Boundary
 Elementary School Attendance Area Boundary - Post-CEF 1 Updates
 Elementary School Attendance Area Boundary - Existing (ESCE)

Elementary School Attendance Area Boundary - Existing (ESCE)
 Bel Air ES
 Churchville ES
 Fountain Green ES
 Prospect Mill ES
 Elementary School Attendance Area Boundary - Existing

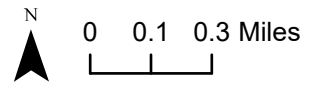
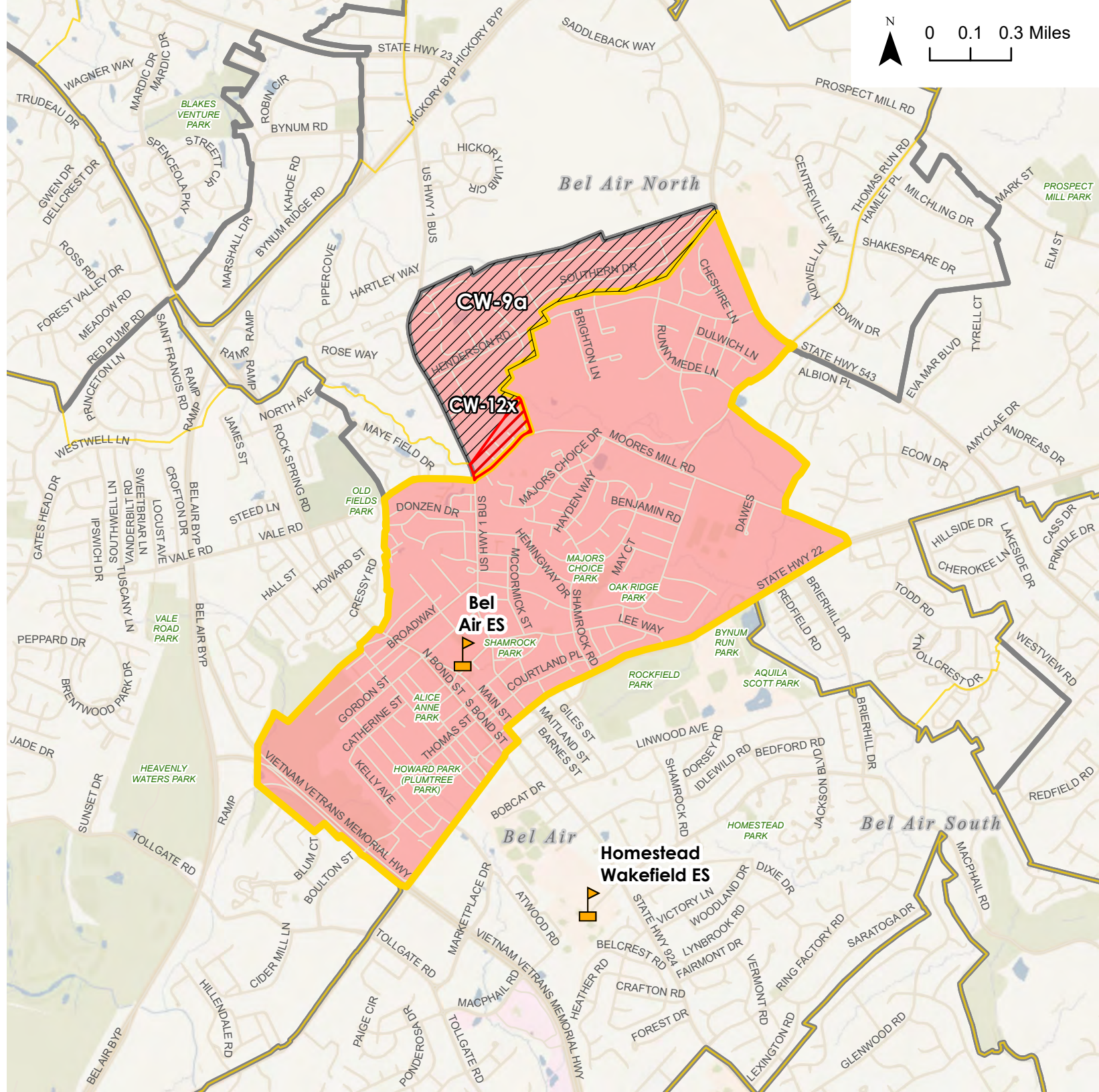
Change Area Label	Update
CE-3 & CE-4	Reverse change and send back to Prospect Mill ES.
CW-9b	Split CW-9 (into CW-9a and CW-9b). CW-9b includes all of Hampton Ridge neighborhood, keep at Bel Air ES.

Post-CEF 1 Updates - Bel Air ES







-  Elementary School
-  District Boundary
-  Advisory Team Working Elementary School Boundary for Bel Air ES
-  Potential Change Area
-  Post-CEF Updates to Potential Change Areas
- Existing Configuration - Elementary Schools**
-  Bel Air ES Current Attendance Area
-  Elementary School Attendance Area
-  Boundary Outline - Current Attendance Area

Change Area Label	Update
CW-9a/b	Split CW-9 (into CW-9a and CW-9b). CW-9b includes all of Hampton Ridge neighborhood, keep at Bel Air ES.
New Change Areas:	
CW-12x	Send Heritage Woods Apartments and Moores Mill Crossing along Moores Mill Rd. to Hickory along with CW-9a.


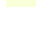

Overview Map



Post-CEF 1 Updates - Churchville ES

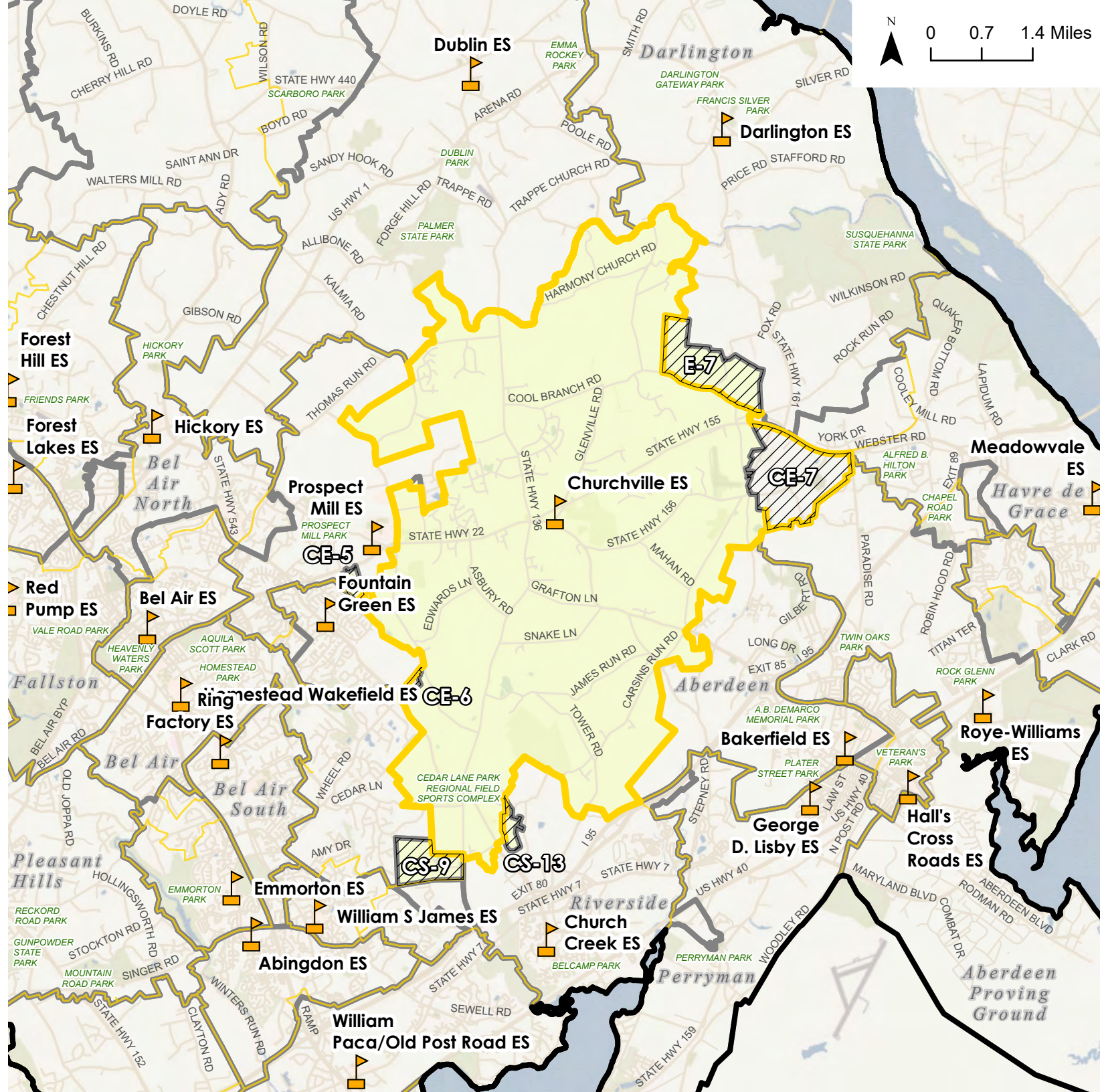
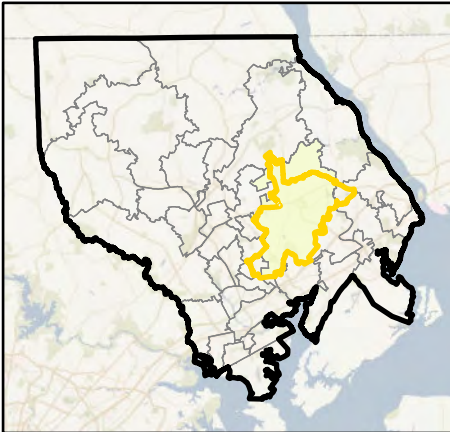
-  Elementary School
-  District Boundary
-  Advisory Team
-  Working Elementary School Boundary for Churchville ES
-  Potential Change Area
-  Post-CEF Updates to Potential Change Areas

Existing Configuration - Elementary Schools




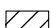

-  Churchville ES Current Attendance Area
-  Elementary School Attendance Area
-  Boundary Outline - Current Attendance Area

Change Area Label	Update
CS-9	Per Transportation, keep this area with CS-7. Send to Homestead Wakefield ES.

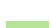

Overview Map

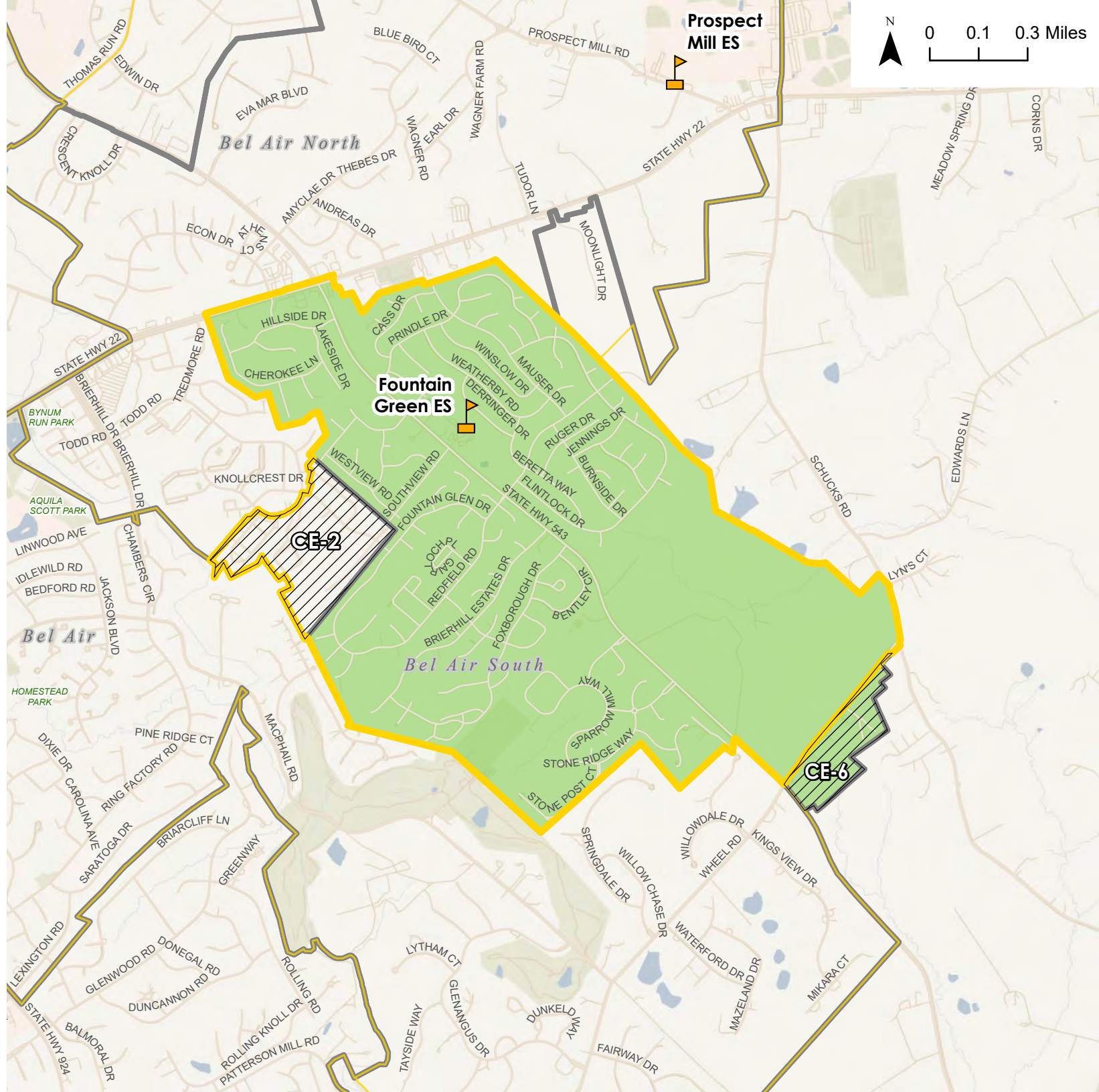
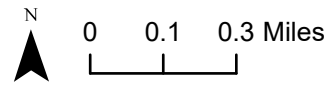


Post-CEF 1 Updates - Fountain Green ES

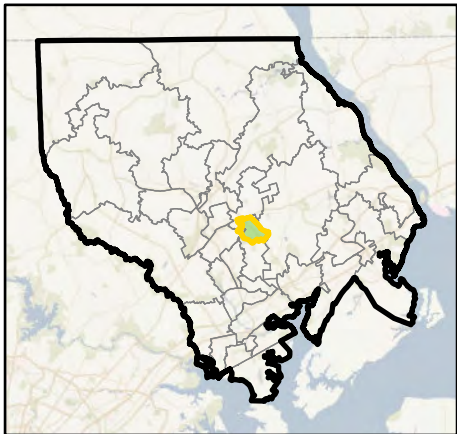
-  Elementary School
-  District Boundary
-  Advisory Team Working Elementary School Boundary for Fountain Green ES
-  Potential Change Area
-  Post-CEF Updates to Potential Change Areas

Existing Configuration - Elementary Schools




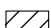

-  Fountain Green ES Current Attendance Area
-  Elementary School Attendance Area Boundary Outline - Current Attendance Area






Overview Map

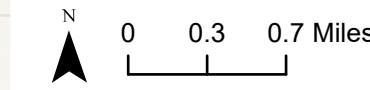


Post-CEF 1 Updates - Prospect Mill ES

-  Elementary School
-  District Boundary
-  Advisory Team Working Elementary School Boundary for Prospect Mill ES
-  Potential Change Area
-  Post-CEF Updates to Potential Change Areas

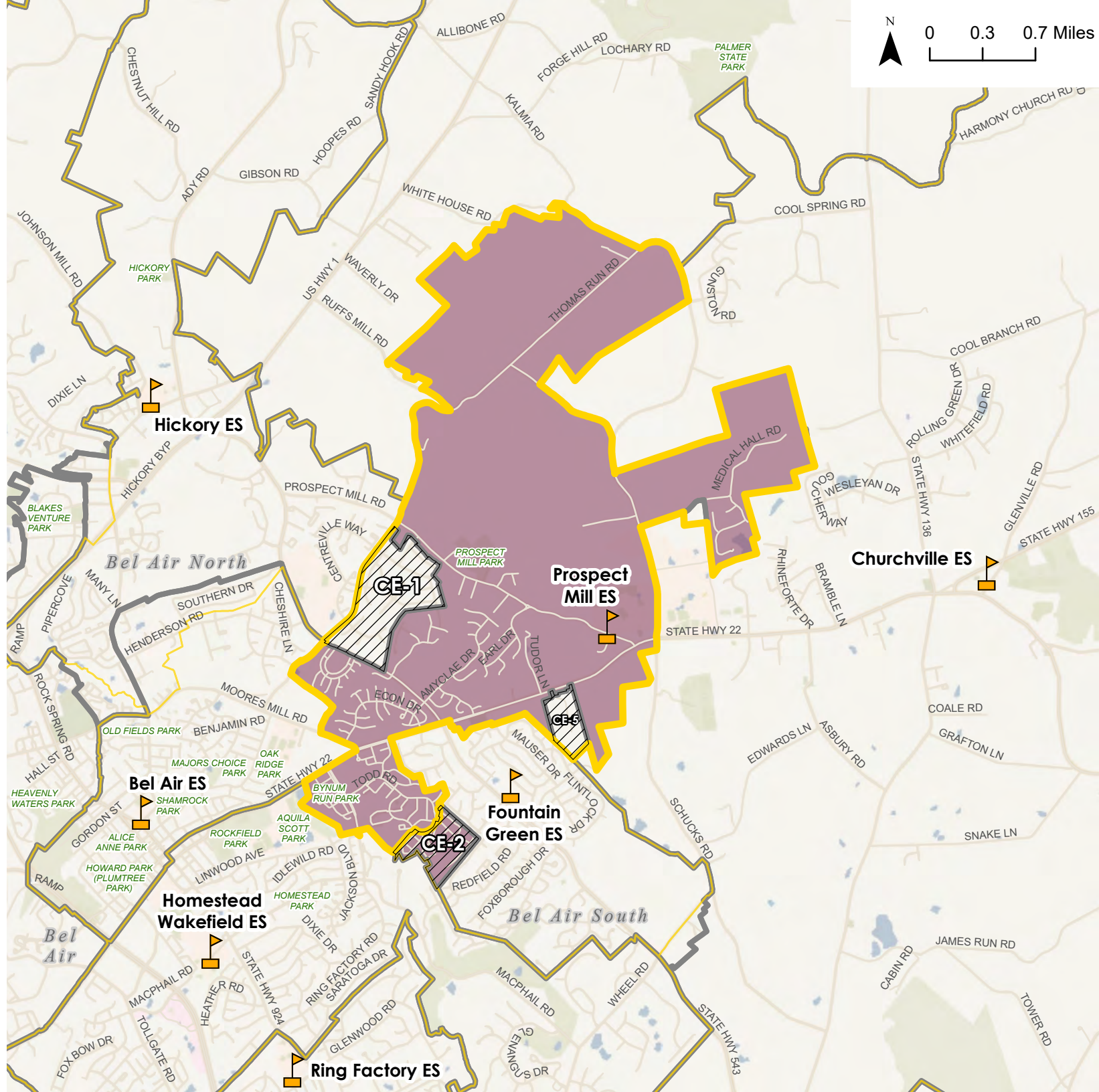
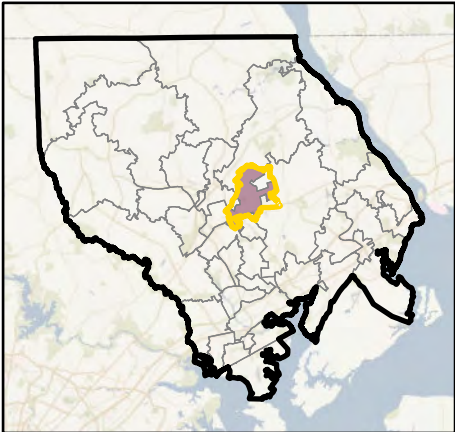
Existing Configuration - Elementary Schools

-  Prospect Mill ES
-  Current Attendance Area
-  Elementary School Attendance Area Boundary Outline - Current Attendance Area

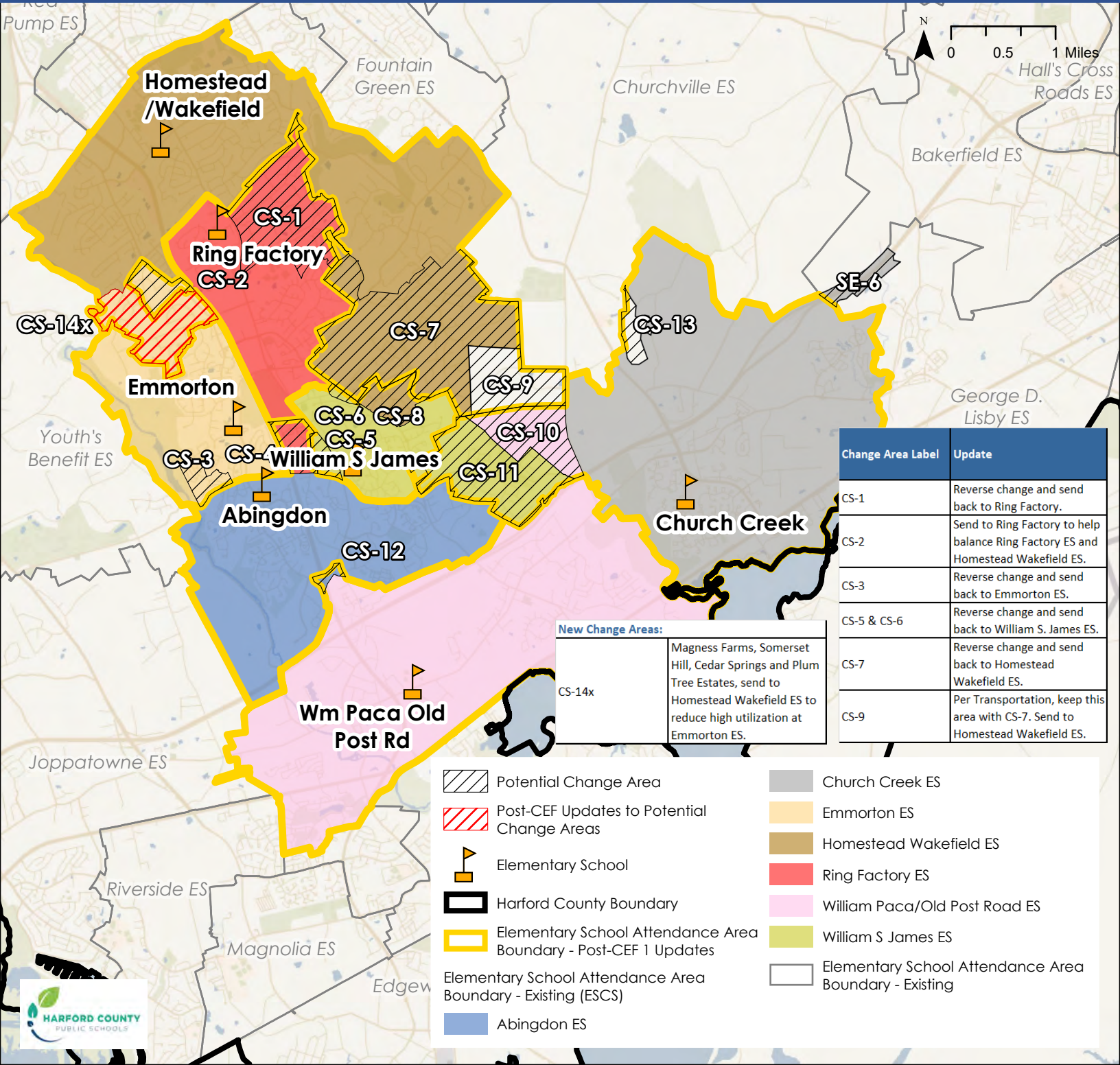


Change Area Label	Update
CE-3 & CE-4	Reverse change and send back to Prospect Mill ES.

Overview Map



District Overview - Post-CEF 1 Updates Elementary School Center South (ESCS)





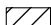



Change Area Label	Update
CS-1	Reverse change and send back to Ring Factory.
CS-2	Send to Ring Factory to help balance Ring Factory ES and Homestead Wakefield ES.
CS-3	Reverse change and send back to Emmorton ES.
CS-5 & CS-6	Reverse change and send back to William S. James ES.
CS-7	Reverse change and send back to Homestead Wakefield ES.
CS-9	Per Transportation, keep this area with CS-7. Send to Homestead Wakefield ES.




New Change Areas:	
CS-14x	Magness Farms, Somerset Hill, Cedar Springs and Plum Tree Estates, send to Homestead Wakefield ES to reduce high utilization at Emmorton ES.

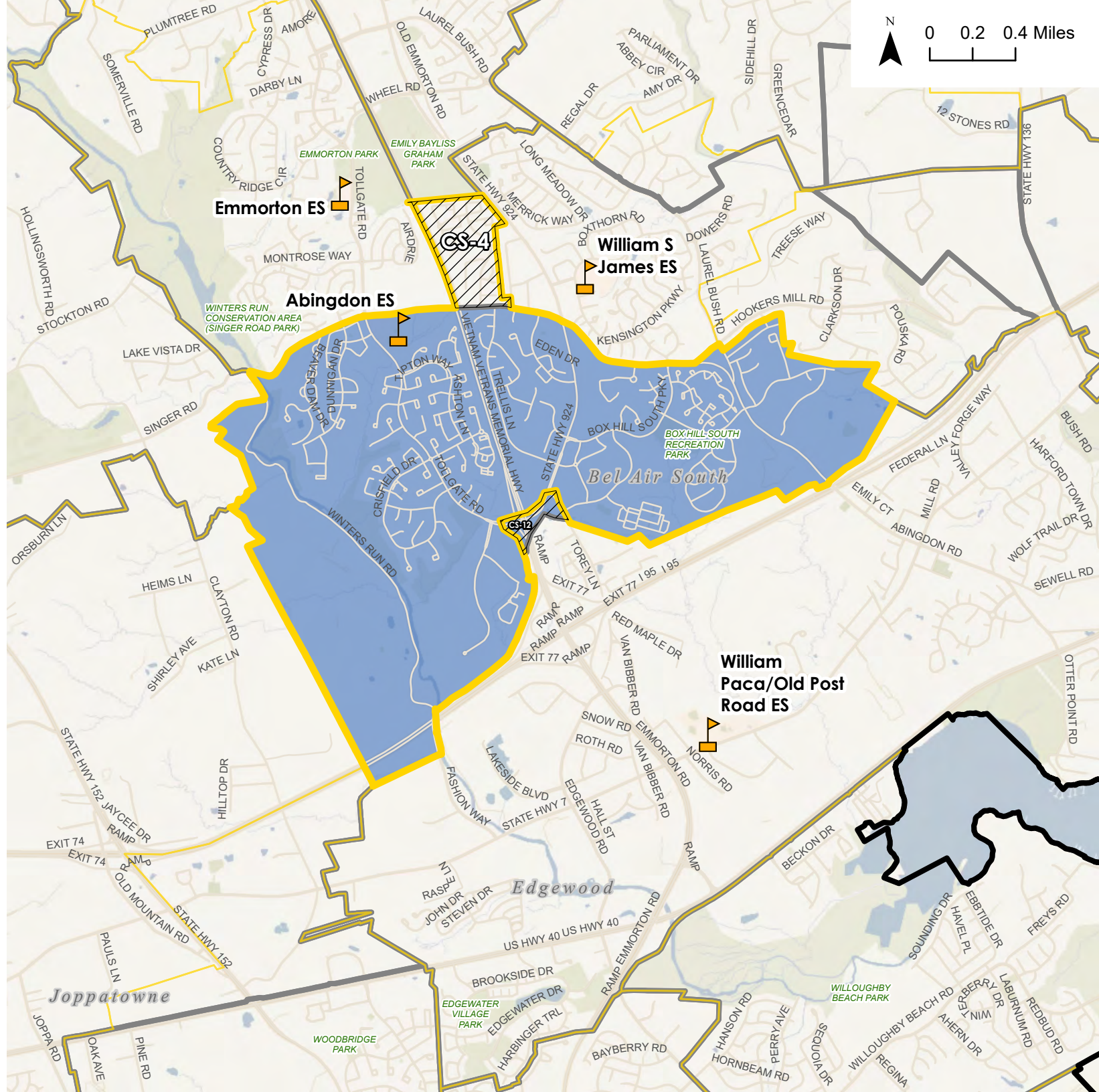
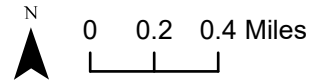
- Potential Change Area
- Post-CEF Updates to Potential Change Areas
- Elementary School
- Harford County Boundary
- Elementary School Attendance Area Boundary - Post-CEF 1 Updates
- Church Creek ES
- Emmorton ES
- Homestead Wakefield ES
- Ring Factory ES
- William Paca/Old Post Road ES
- William S James ES
- Abingdon ES
- Elementary School Attendance Area Boundary - Existing (ESCS)

Post-CEF 1 Updates - Abingdon ES

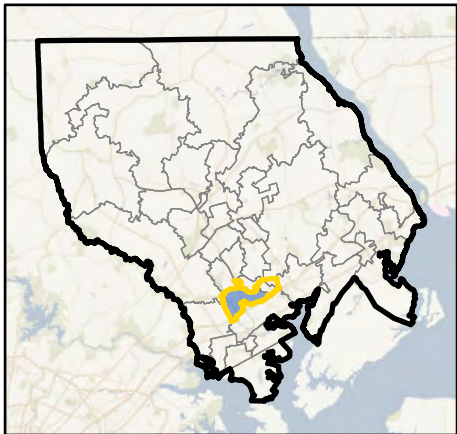
-  Elementary School
-  District Boundary
-  Advisory Team
-  Working Elementary School Boundary Area for Abingdon ES
-  Potential Change Area
-  Post-CEF Updates to Potential Change Areas

Existing Configuration - Elementary Schools





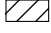
-  Abingdon ES Current Attendance Area
-  Elementary School Attendance Area
-  Boundary Outline - Current Attendance Area





Overview Map

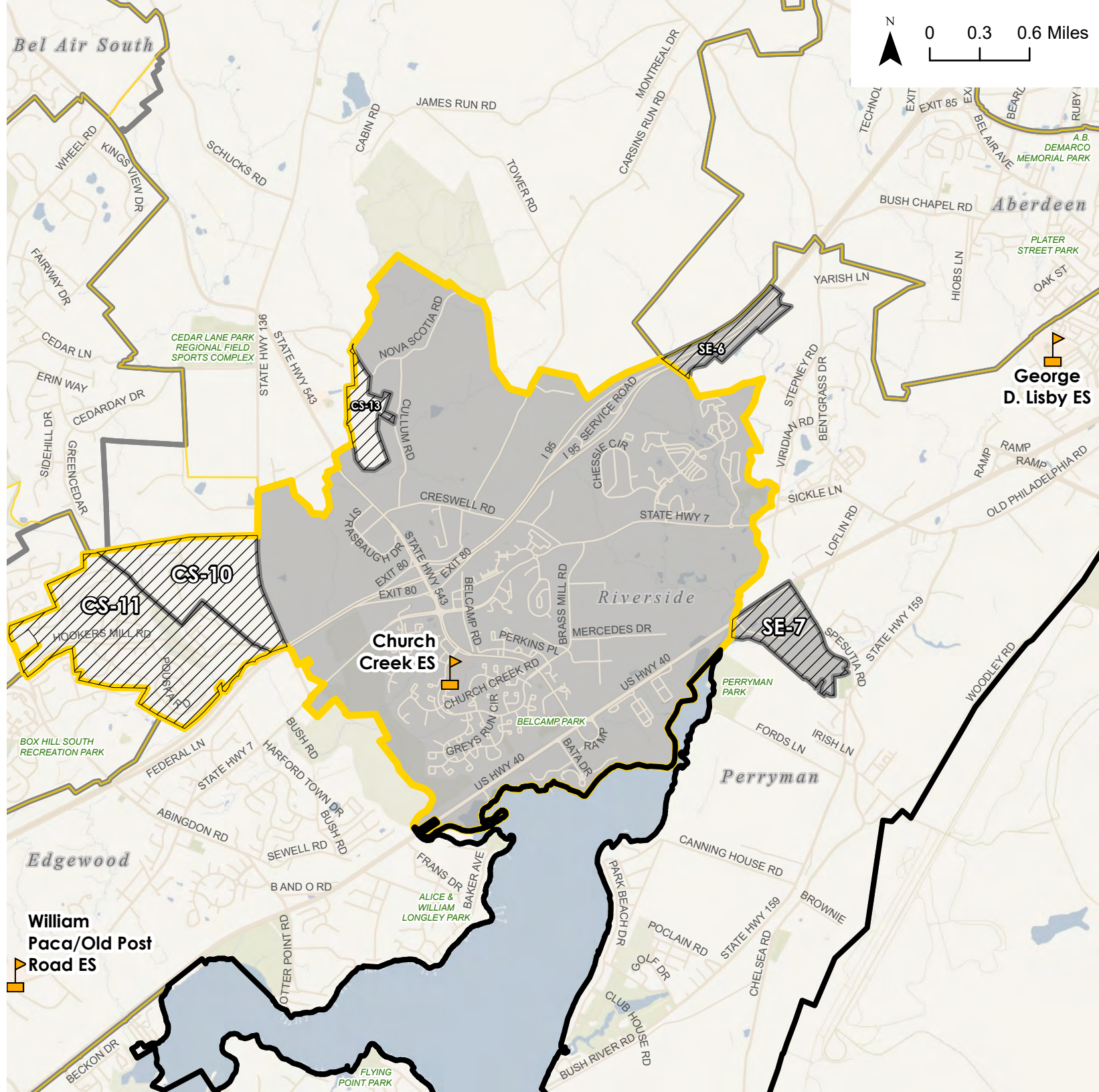
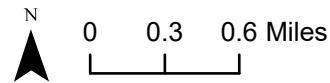


Post-CEF 1 Updates - Church Creek ES

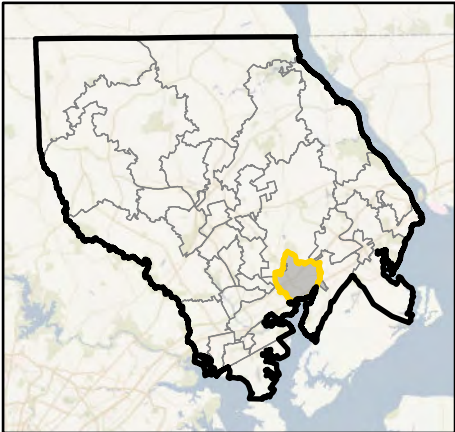
-  Elementary School
-  District Boundary
-  Advisory Team Working Elementary School Boundary for Church Creek ES
-  Potential Change Area
-  Post-CEF Updates to Potential Change Areas

Existing Configuration - Elementary Schools





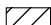

-  Church Creek ES Current Attendance Area
-  Elementary School Attendance Area Boundary Outline - Current Attendance Area






Overview Map

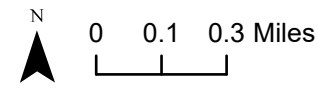


Post-CEF 1 Updates - Emmorton ES

-  Elementary School
-  District Boundary
-  Advisory Team
-  Working Elementary School Boundary for Emmorton ES
-  Potential Change Area
-  Post-CEF Updates to Potential Change Areas

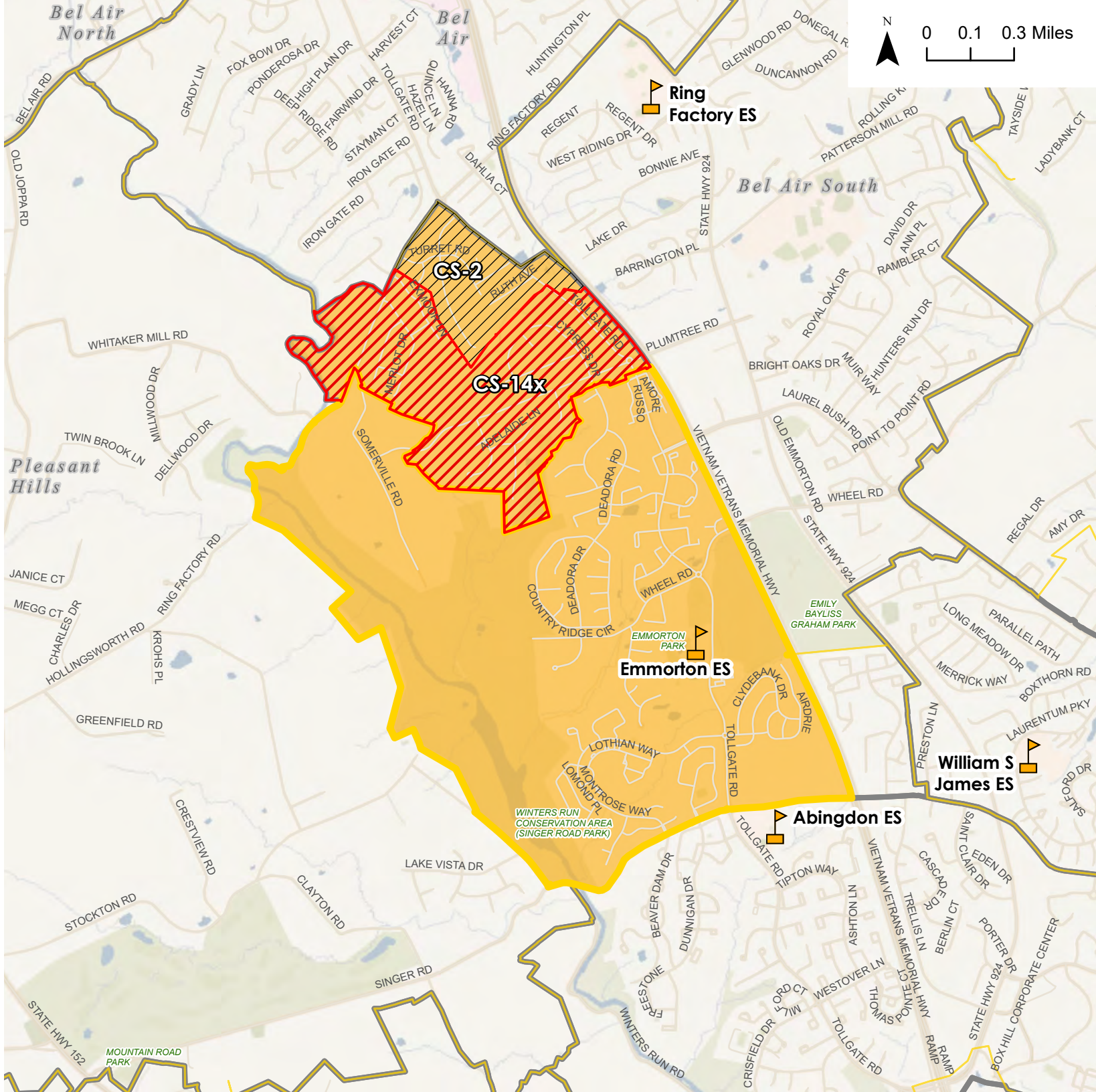
Existing Configuration - Elementary Schools

-  Emmorton ES Current Attendance Area
-  Elementary School Attendance Area
-  Boundary Outline - Current Attendance Area










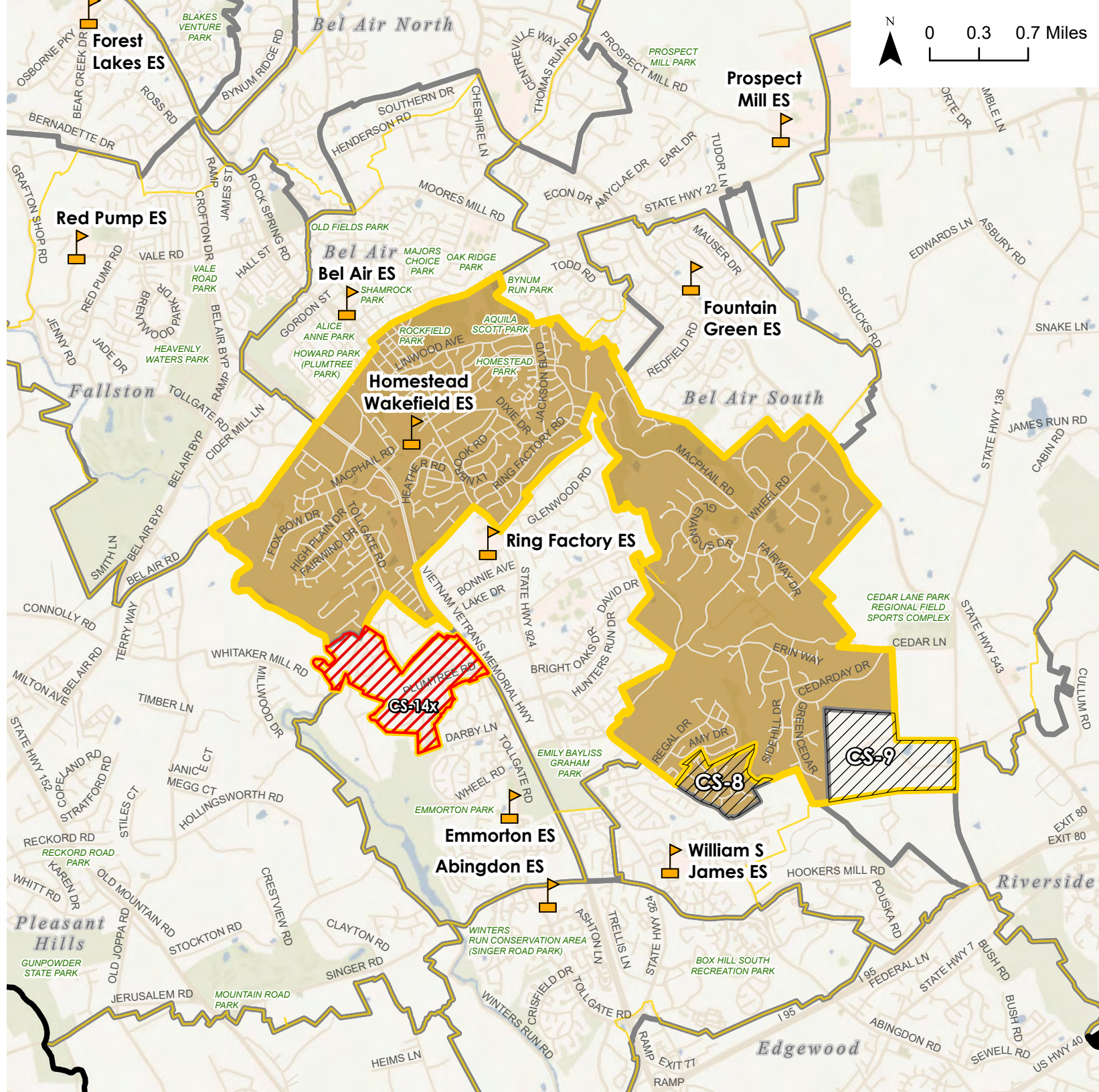
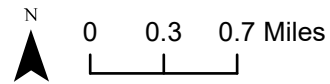
Change Area Label	Update
CS-2	Send to Ring Factory to help balance Ring Factory ES and Homestead Wakefield ES.
New Change Areas:	
CS-14x	Magness Farms, Somerset Hill, Cedar Springs and Plum Tree Estates, send to Homestead Wakefield ES to reduce high utilization at Emmorton ES.

Overview Map



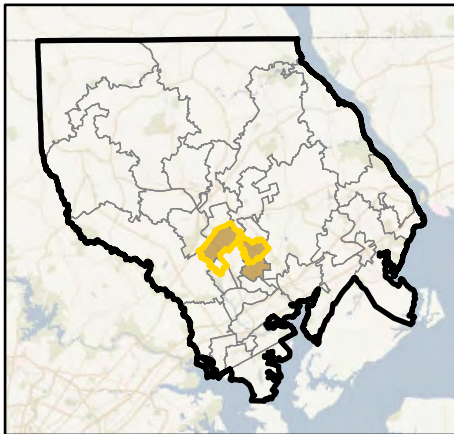
Post-CEF 1 Updates - Homestead Wakefield ES

-  Elementary School
-  District Boundary
-  Advisory Team Working Elementary School Boundary for Homestead Wakefield ES
-  Potential Change Area
-  Post-CEF Updates to Potential Change Areas
- Existing Configuration - Elementary Schools**
-  Homestead Wakefield ES Current Attendance Area
-  Elementary School Attendance Area Boundary Outline - Current Attendance Area









Change Area Label	Update
CS-9	Per Transportation, keep this area with CS-7. Send to Homestead Wakefield ES.
New Change Areas:	
CS-14x	Magness Farms, Somerset Hill, Cedar Springs and Plum Tree Estates, send to Homestead Wakefield ES to reduce high utilization at Emmorton ES.




Overview Map



Post-CEF 1 Updates - Ring Factory ES

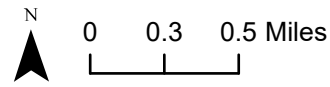
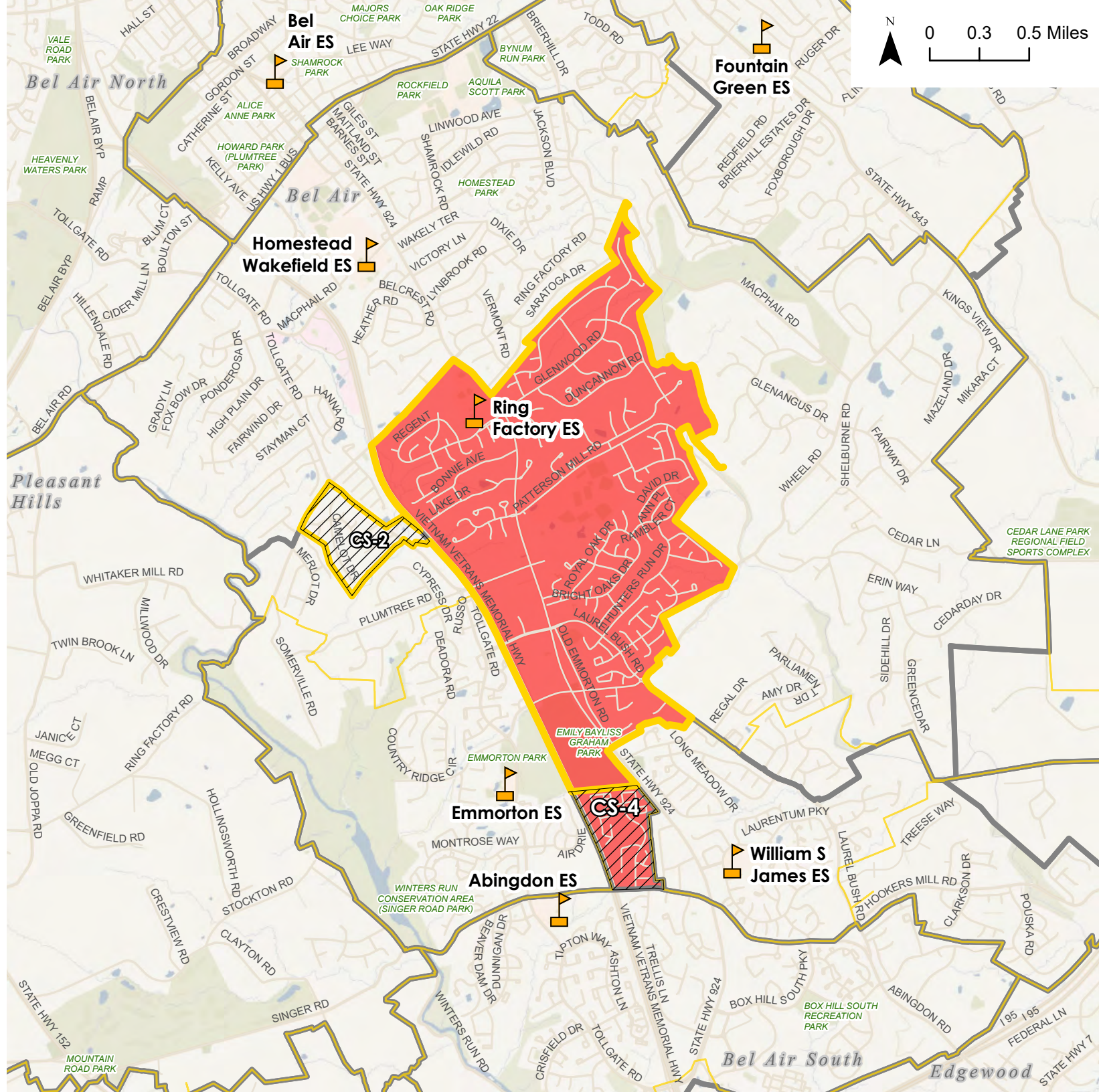
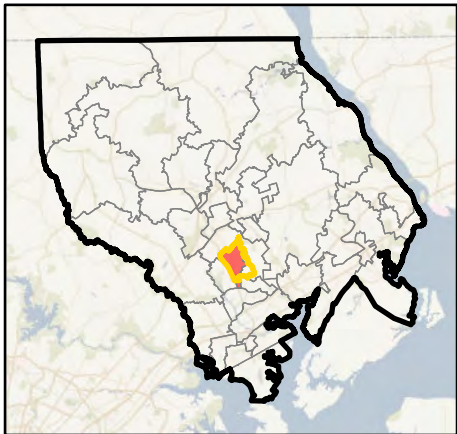
-  Elementary School
-  District Boundary
-  Advisory Team
-  Working Elementary School Boundary for Ring Factory ES
-  Potential Change Area
-  Post-CEF Updates to Potential Change Areas

Existing Configuration - Elementary Schools





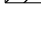



-  Ring Factory ES
-  Elementary School Attendance Area
-  Boundary Outline - Current Attendance Area

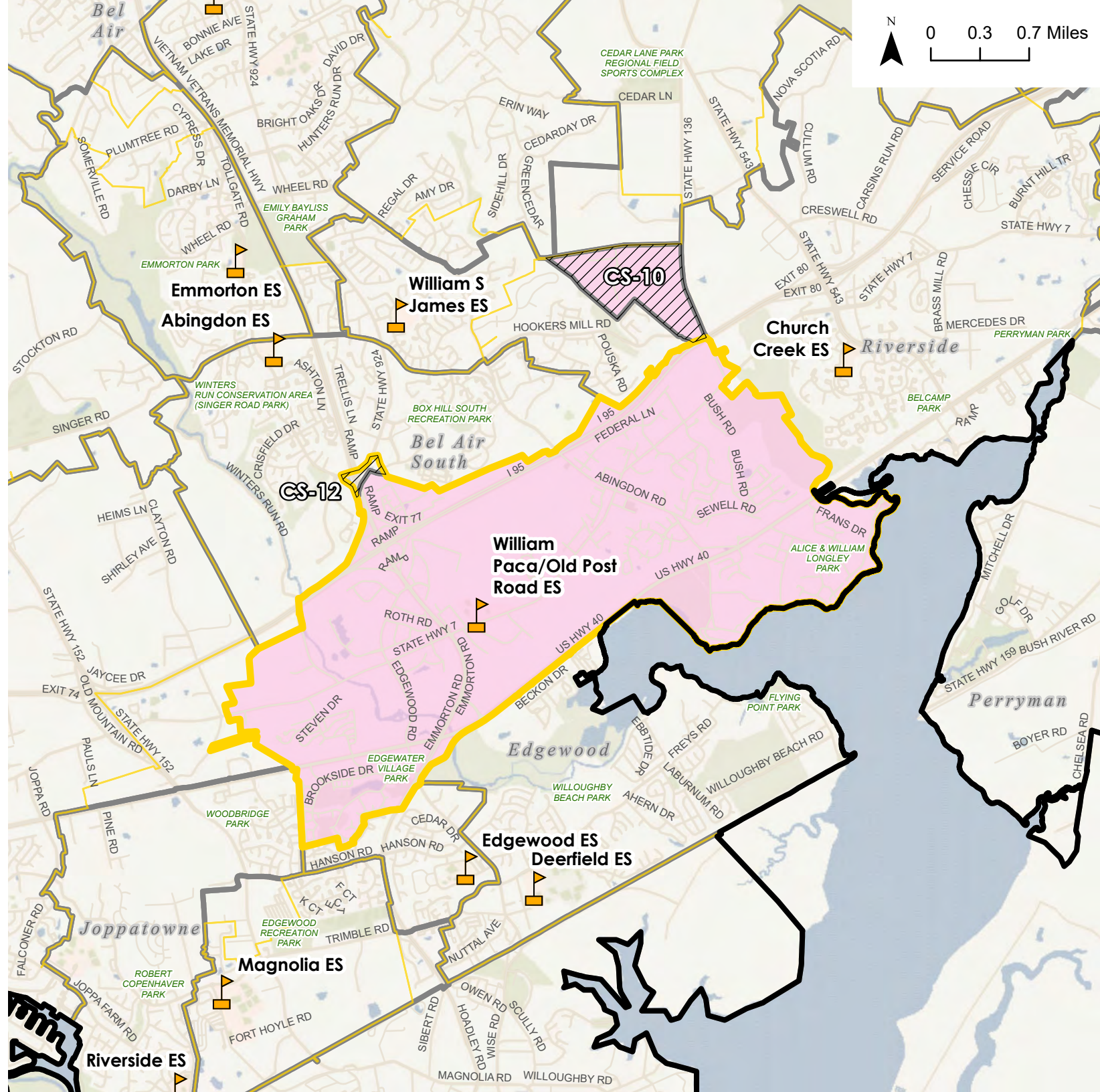
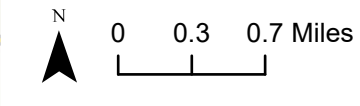
Change Area Label	Update
CS-2	Send to Ring Factory to help balance Ring Factory ES and Homestead Wakefield ES.

Overview Map

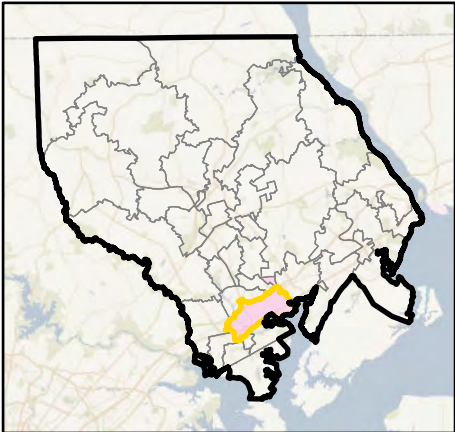


**Post-CEF 1 Updates -
William Paca/Old Post Road
ES**






-  Elementary School
-  District Boundary
-  Advisory Team Working Elementary School Boundary for William Paca/Old Post Road ES
-  Potential Change Area
-  Post-CEF Updates to Potential Change Areas
- Existing Configuration - Elementary Schools**
-  William Paca/Old Post Road ES Current Attendance Area
-  Elementary School Attendance Area
-  Boundary Outline - Current Attendance Area





Overview Map

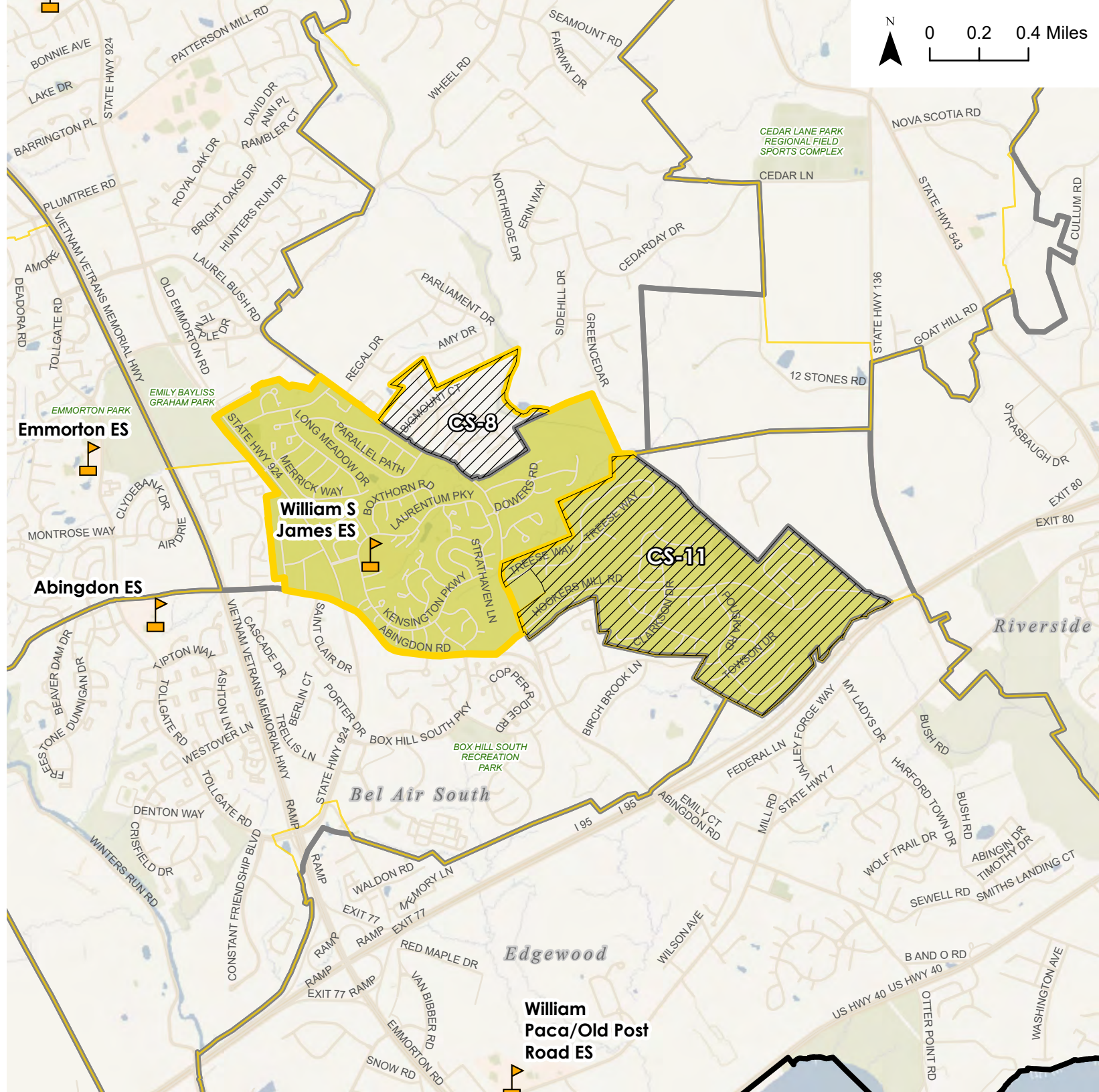
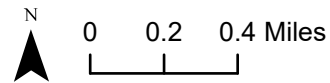


Post-CEF 1 Updates - William S James ES

-  Elementary School
-  District Boundary
-  Advisory Team Working Elementary School Boundary for William S James ES
-  Potential Change Area
-  Post-CEF Updates to Potential Change Areas

Existing Configuration - Elementary Schools

-  William S James ES Current Attendance Area
-  Elementary School Attendance Area Boundary Outline - Current Attendance Area



Overview Map

