

HCPS Birth to Five Supports





Vision for Maryland

Maryland, where all children with and without disabilities learn, play, and grow together, reach their full potential, and meaningfully participate in their communities.

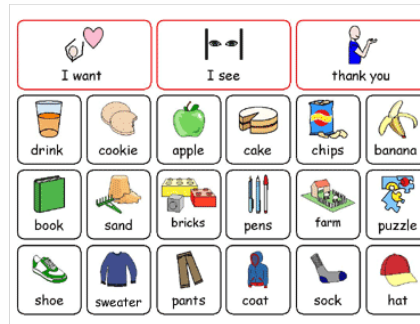
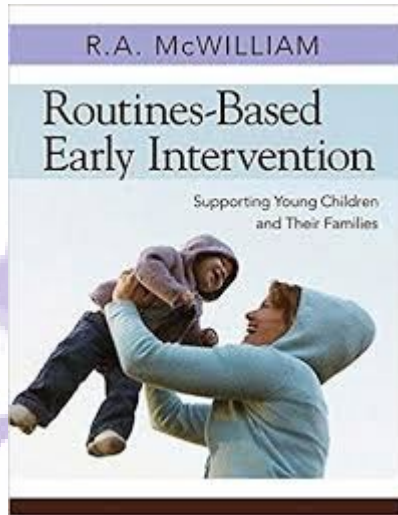


Birth through Five Team



Alone we can do so little; together we can do so much. Helen Keller

Essentials for Our Journey



Developmental Milestones

Learn the Signs. Act Early.

Learn the Signs Home

Learn the Signs Home

Milestones

- 2 months
- 4 months
- 6 months
- 9 months
- 1 year
- 18 months
- 2 years

CDC's Developmental Milestones

[Español \(Spanish\)](#)

Skills such as taking a first step, smiling for the first time, and waving "bye bye" are called developmental milestones. Children reach milestones in how they play, learn, speak, act, and move (crawling, walking, etc.).

Click on the age of your child to see the milestones:



- [2 months](#)
- [4 months](#)
- [6 months](#)
- [9 months](#)
- [1 year](#)
- [18 months](#)

Download Today!

CDC's FREE Milestone Tracker App

- Track Milestones
- Share a Summary
- Get Tips & Activities

Available on the App Store | GET IT ON Google Play



Healthy Beginnings



HEALTHY BEGINNINGS:

Supporting Development and Learning
from Birth through Three Years of Age



Every Baby, Every Child

<http://olms.cte.jhu.edu//olms2/data/ck/sites/3910/files/HealthyBeginnings2015.pdf>

Help Me Grow



Developmental
Milestones

Get Help
for a Child

Helpful
Resources

About
Help Me Grow

Refer a Child



What Are Milestones?

Children develop in certain predictable ways, referred to as developmental milestones. Milestones cover four areas of a child's development -- cognitive, communication and language, social and emotional, and motor. Milestones help you understand how your child learns and grows. Please select a child's age or a specific area of development to learn more about milestones at certain ages.



Infants and Toddlers Program



- Service children Birth through 3 (some 4 year olds) through an Individual Family Service Plan (IFSP).
- Children are provided service in their natural environment (e.g. home, daycare).
- Children are eligible for services if they meet following criteria:
 - 25% delay in one or more areas of development
 - Atypical development in one or more areas of development
 - Diagnosis placing child at risk for developmental delays (auto-eligible)

Referrals for Children Birth to Three

When an infant or toddler is suspected of having a developmental delay, exhibits atypical behavior, or has been diagnosed with a special health care need, he or she may be referred to the local Infants and Toddlers Program by a parent, health or education provider, child care or social service provider, or a staff person from the NICU or hospital, just to name a few. Referrals to the Maryland Infants and Toddlers Program can be made for children ages birth to 36 months who reside in Maryland.

Harford County Public Schools Infants and Toddlers Program: 410-638-3823

Online Referral: <https://referral.mditp.org/Referral.html>

Infants and Toddlers Coaching Model



[Family Coaching Resource](#)

Referrals for Children Ages 3-5

If families and providers have concerns regarding a child's development, they can contact Child Find. The Child Find process includes referral, pre-screening to determine the need for assessment, an initial evaluation to determine eligibility and the development of an Individual Education Program (IEP) or Service Plan upon eligibility for special education services. If a preschool age child is determined eligible for special education services, the IEP team will consider a continuum of services and placement options including services in the community or school-based preschool settings.

Child Find: [410-638-4386](tel:410-638-4386)

Continuum of Placements for Least Restrictive Environment

Community Support

Learning Together Preschool Program

Prekindergarten Programs

Early Learner
Preschool
Program

Harford
Academy

Community Support



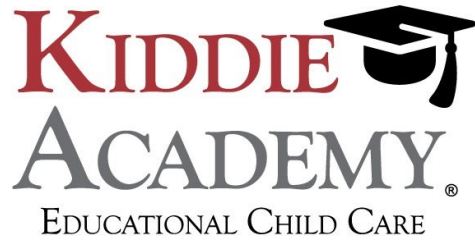
Consulting



Resource



Coaching



Direct Instruction

Training



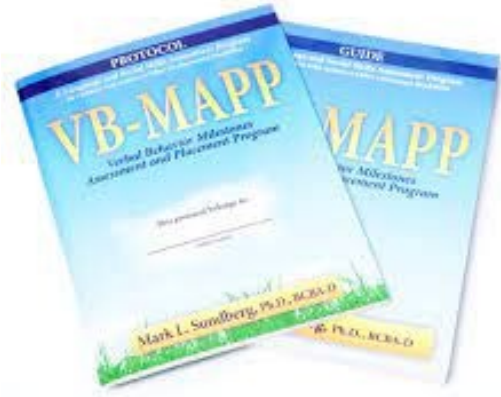
Learning Together Preschool Program



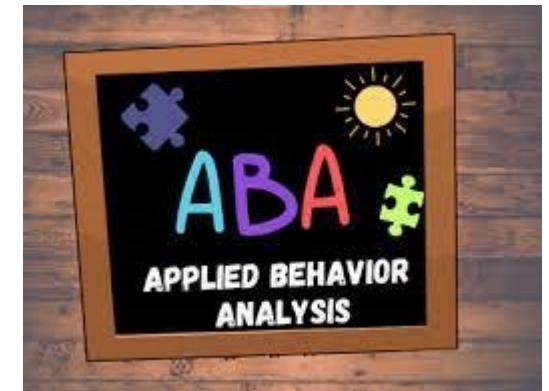
“My child came home one day and said he wants to learn sign language so that he can talk to a new student in class who has a hearing impairment.” —Peer parent

“I have seen great improvements in speech, behavior, and overall development. There is a greater attempt made to communicate with others and to engage in play. There is also a better understanding of appropriate play.” —Parent of child with an IEP





Early Learner Preschool Program





Prekindergarten Programs



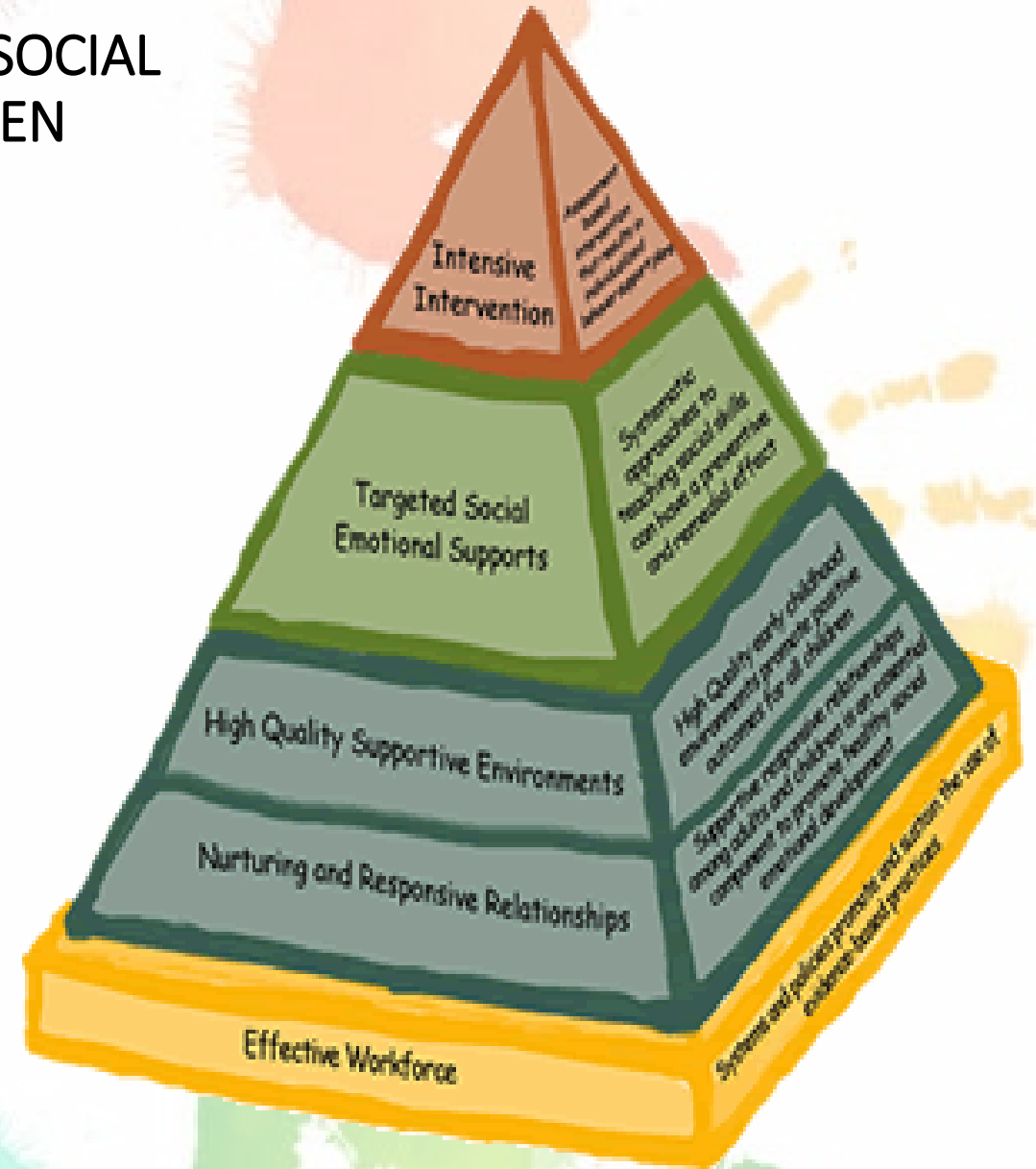
Harford Academy Preschool Program



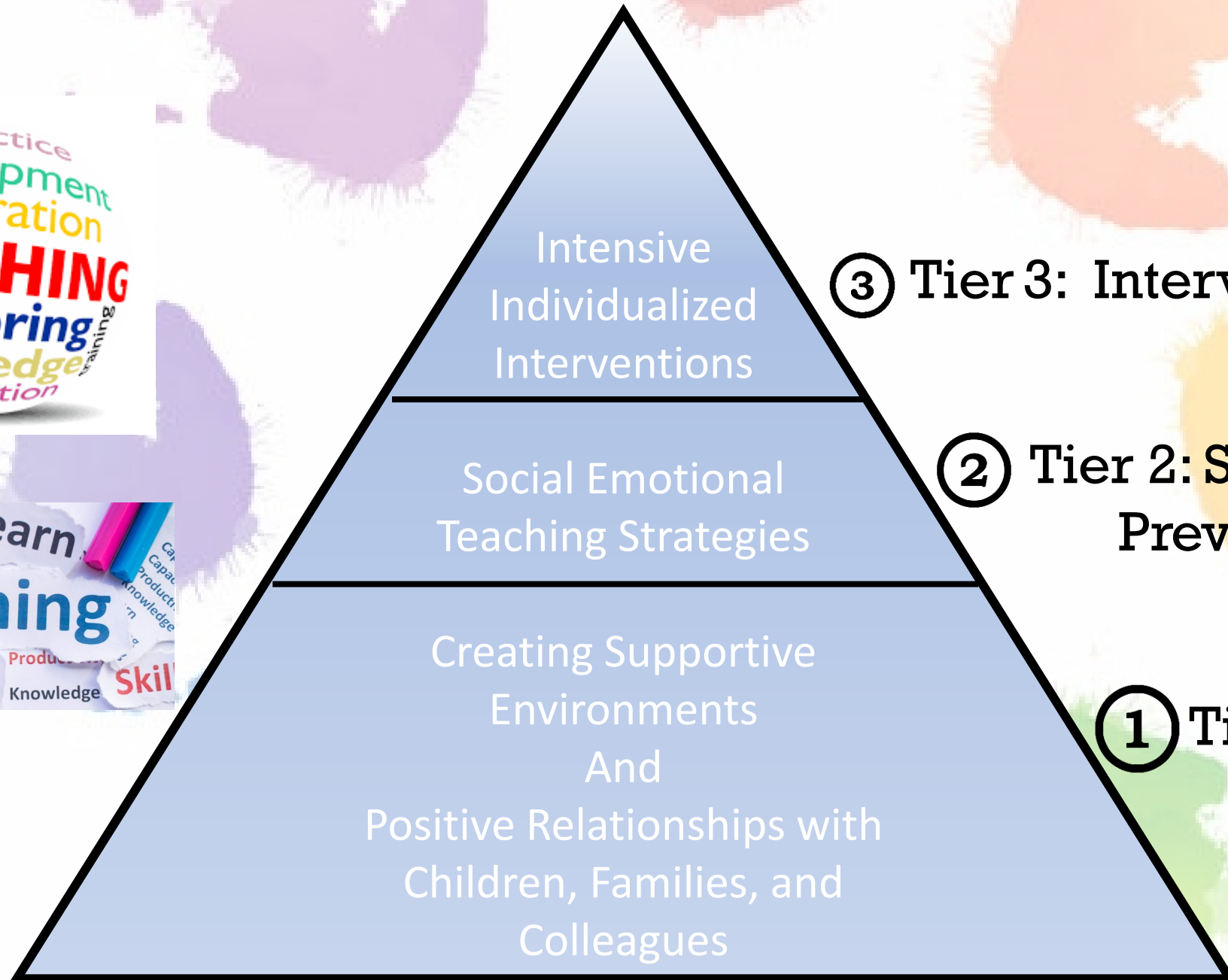
INTERVENTIONS AND APPROACHES TO SUPPORT SOCIAL EMOTIONAL COMPETENCE IN YOUNG CHILDREN

Pyramid Model

- Public health, tiered model (pyramid model) to promote the development of all children and support social emotional competence in young children.
- Provides a conceptual framework for a comprehensive array of interventions and approaches.
- Supported by MSDE and nationally as an evidence-based approach



PYRAMID MODEL



Intensive
Individualized
Interventions

③ Tier 3: Intervention for few

Social Emotional
Teaching Strategies

② Tier 2: Secondary
Prevention

Creating Supportive
Environments
And
Positive Relationships with
Children, Families, and
Colleagues

① Tier 1: Universal
for all

Beginning Early with Families in Infants and Toddlers



[Chicago Parent Program](#)

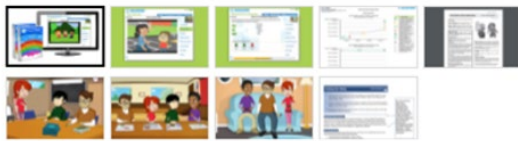


Infants and Toddlers is implementing **Stepping Stones** a learner readiness group for parents and children. They learn how to follow visual schedules, routines, social skills (using Teach Town), early literacy, early math literacy and communication skills.

Resources for Pyramid Model



Blue	Green	Yellow	Red
Low	Happy	Wobbly	Angry
Running Slow	Good to Go	Caution	STOP
unhappy tired withdrawn tearful	positive proud calm focused	excited nervous frustrated annoyed	mad furious yelling aggressive



[National Center for Pyramid Model Innovations](#)

[Early Childhood Sharepoint Site](#)



National Center for Pyramid Model Innovations